

WAAS CH <b>93808</b> W35A	APP CRS <b>355°</b>	Rwy Idg <b>7201</b> TDZE <b>1008</b> Apt Elev <b>1009</b>
---------------------------------	------------------------	---

# RNAV (GPS) RWY 35

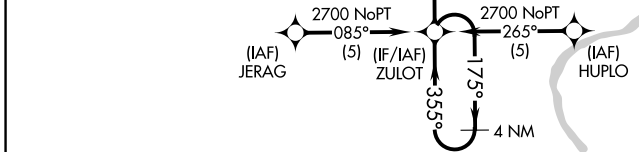
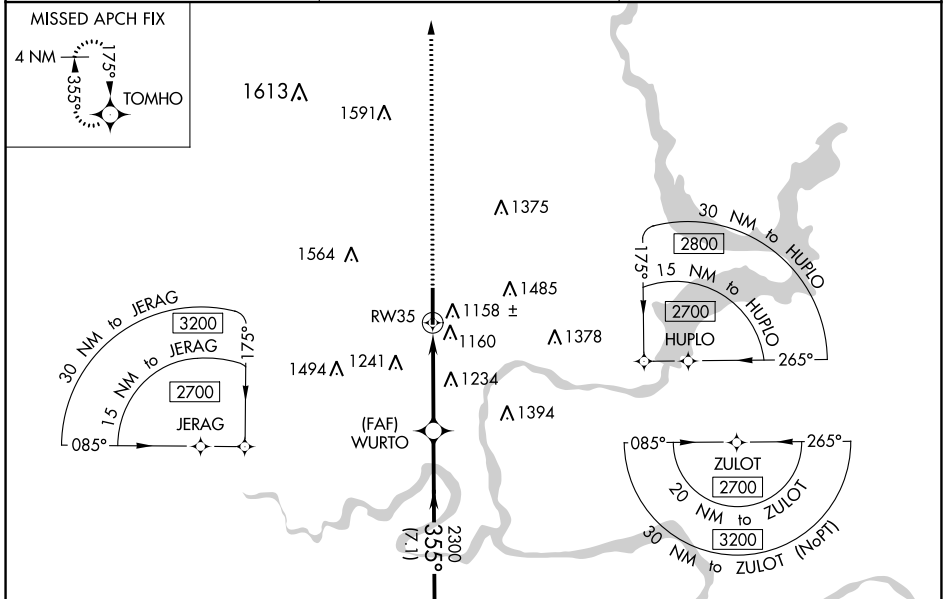
PONCA CITY RGNL (PNC)

**⚠** For uncompensated Baro-VNAV systems, LNAV/VNAV NA below -17°C (2°F) or above 46°C (114°F). DME/DME RNP-0.3 NA. When local altimeter setting not received use Winfield-Arkansas City altimeter setting and increase LPV DA to 1377 feet, LNAV/VNAV DA to 1560 feet and all MDA 100 feet; increase LPV all Cats, LNAV/VNAV all Cats, LNAV Cats C and D and Circling Cats C and D visibility ¼ SM. Baro-VNAV NA when using Winfield-Arkansas City altimeter setting. Visibility reduction by helicopters NA.

**ODALS**

**MISSED APPROACH:**  
Climb to 2800 direct TOMHO and hold.

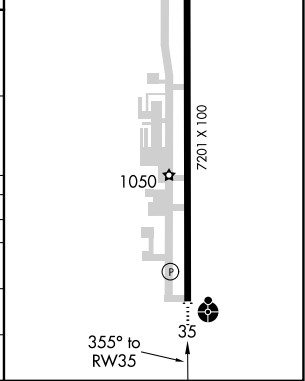
ASOS <b>134.075</b>	KANSAS CITY CENTER <b>127.8 319.1</b>	UNICOM <b>123.0 (CTAF)</b>
------------------------	--	-------------------------------



ELEV 1009	TDZE 1008
HIRL Rwy 17-35	

4 NM Holding Pattern	ZULOT	2800	TOMHO
2700 ← 175°	→ 355°	↑	
GP 3.00°	355°	2300	RW35
TCH 45	7.1 NM	3.9 NM	

CATEGORY	A	B	C	D
LPV DA		1295-1	287 (300-1)	
LNAV/VNAV DA		1478-1¾	470 (500-1¾)	
LNAV MDA	1540-1	532 (600-1)	1540-1½ 532 (600-1½)	1540-1¾ 532 (600-1¾)
CIRCLING	1540-1 531 (600-1)	1580-1 571 (600-1)	1800-2½ 791 (800-2½)	1880-2¾ 871 (900-2¾)



SC-1, 18 APR 2024 to 16 MAY 2024

SC-1, 18 APR 2024 to 16 MAY 2024