

WAAS CH 86727 W21A	APP CRS 210°	Rwy Idg TDZE Apt Elev	6780 857 859
--	------------------------	-----------------------------	---

RNAV (GPS) RWY 21

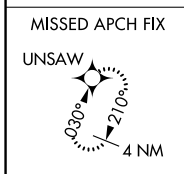
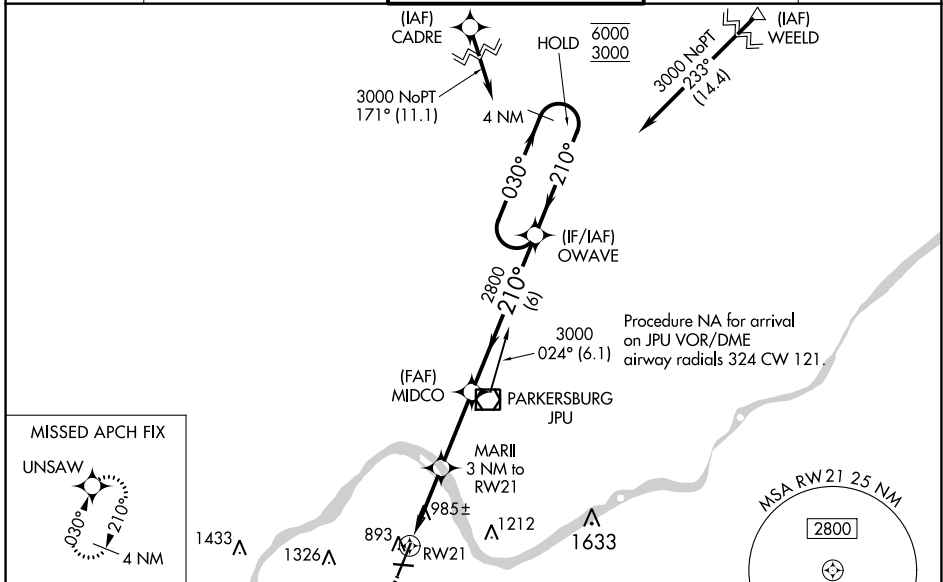
MID-OHIO VALLEY RGNL (PKB)

RNP APCH.

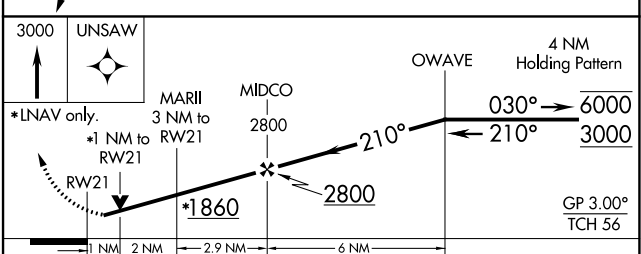
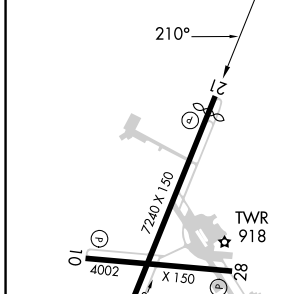
Baro-VNAV and VDP NA when using Athens/Albany altimeter setting. Rwy 21 helicopter visibility reduction below 3/4 SM NA. For uncompensated Baro-VNAV systems, procedure NA below -17°C or above 38°C. When local altimeter setting not received, use Athens/Albany altimeter setting: increase LPV DA to 1249 feet and visibility all Cats 1/2 SM; increase LNAV/VNAV DA to 1237 feet and visibility all Cats 1/2 SM; increase all MDAs 100 feet and visibility Cat C/D 1/2 SM. Circling Rwy 10, 28 NA at night.

MISSED APPROACH:
Climb to 3000 direct UNSAW and hold.

ATIS 124.35	INDIANAPOLIS CENTER 125.55 317.475	PARKERSBURG TOWER * 123.7 (CTAF) 0 257.8	GND CON 126.45	UNICOM 122.95
-----------------------	--	--	--------------------------	-------------------------



ELEV 859	D	TDZE 857
----------	----------	----------



CATEGORY	A	B	C	D
LPV DA		1149-7/8	292 (300-7/8)	
LNAV/VNAV DA		1137-7/8	280 (300-7/8)	
LNAV MDA	1240-1	383 (400-1)	1240-1 1/2	383 (400-1 1/2)
CIRCLING	1320-1 461 (500-1)	1380-1 521 (600-1)	1640-2 1/4 781 (800-2 1/4)	1640-2 1/2 781 (800-2 1/2)

REIL Rwy 28
REIL Rwy 10, 21
HIRL Rwy 3-21 and 10-28

NE-4, 18 APR 2024 to 16 MAY 2024

NE-4, 18 APR 2024 to 16 MAY 2024