

HI-ILS Y or LOC Y RWY 13

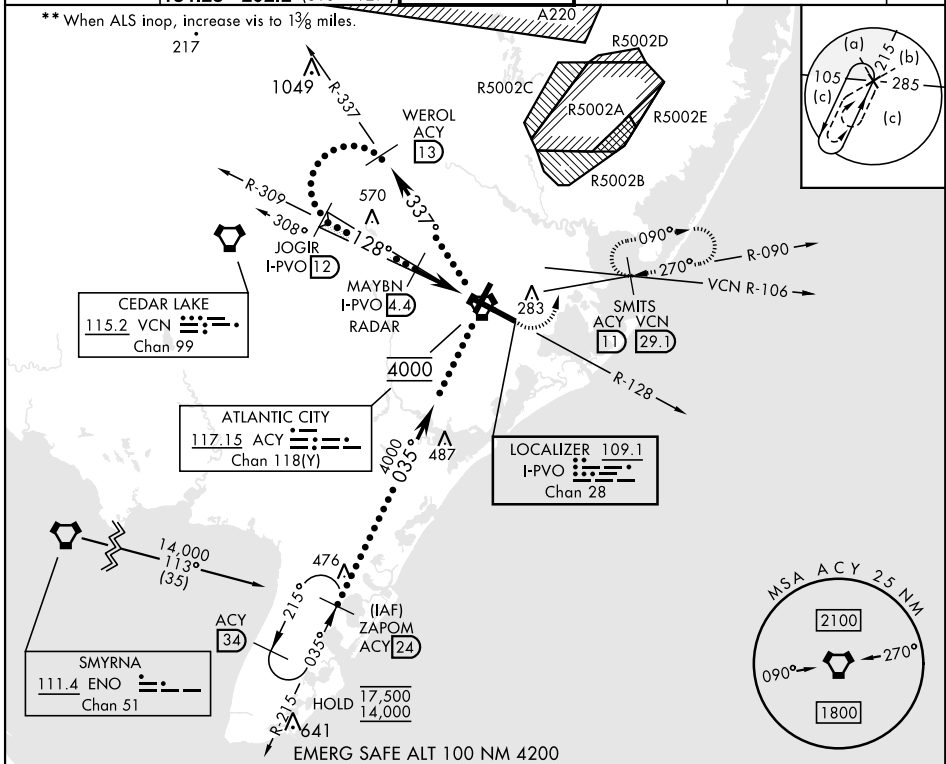
LOC/DME I-PVO 109.1 Chan 28	APCH CRS 128°	Rwy Idg TDZE Arprt Elev 75 75
--	-------------------------	---

[USAF]

ATLANTIC CITY INTL (KACY)

DME or RADAR required * When ALS inop, increase RVR to 40 and vis to 3/4 mile.	MALSR 	MISSED APPROACH: Climb to 600 then climbing left turn to 2000 on ACY R-090 to SMITS/ACY 11 DME and hold.
---	-----------	--

ATIS 125.725 316.15	APP CON 124.6 327.125 (130° - 309°) 134.25 292.2 (310° - 129°)	TOWER 120.3 239.0	GND CON 121.9 284.6	CLNC DEL 127.85 353.775	ASR
-------------------------------	--	-----------------------------	-------------------------------	-----------------------------------	-----



Use I-PVO DME when on the LOC course. VGSI and ILS glidepath not coincident (VGSI Angle 3.00/TCH 71).	ELEV 75	TDZE 75																												
<table border="1"> <thead> <tr> <th>CATEGORY</th> <th>C</th> <th>D</th> <th>E</th> </tr> </thead> <tbody> <tr> <td>S-ILS 13 *</td> <td>275/18</td> <td>200</td> <td>(200-1/2)</td> </tr> <tr> <td>S-LOC 13 **</td> <td>520/45</td> <td>445</td> <td>(500-7/8)</td> </tr> </tbody> </table>	CATEGORY	C	D	E	S-ILS 13 *	275/18	200	(200-1/2)	S-LOC 13 **	520/45	445	(500-7/8)	<table border="1"> <thead> <tr> <th colspan="5">FAF to MAP 4.6 NM</th> </tr> <tr> <th>Knots</th> <th>120</th> <th>140</th> <th>160</th> <th>180</th> <th>200</th> </tr> </thead> <tbody> <tr> <td>Min:Sec</td> <td>2:18</td> <td>1:58</td> <td>1:43</td> <td>1:32</td> <td>1:23</td> </tr> </tbody> </table>	FAF to MAP 4.6 NM					Knots	120	140	160	180	200	Min:Sec	2:18	1:58	1:43	1:32	1:23
CATEGORY	C	D	E																											
S-ILS 13 *	275/18	200	(200-1/2)																											
S-LOC 13 **	520/45	445	(500-7/8)																											
FAF to MAP 4.6 NM																														
Knots	120	140	160	180	200																									
Min:Sec	2:18	1:58	1:43	1:32	1:23																									

HI-ILS Y or LOC Y RWY 13

NE-2, 18 APR 2024 to 16 MAY 2024

NE-2, 18 APR 2024 to 16 MAY 2024