

WAAS CH <b>50113</b> <b>W31A</b>	APP CRS <b>308°</b>	Rwy Idg TDZE Apt Elev	<b>10000</b> <b>63</b> <b>75</b>
--	------------------------	-----------------------------	--

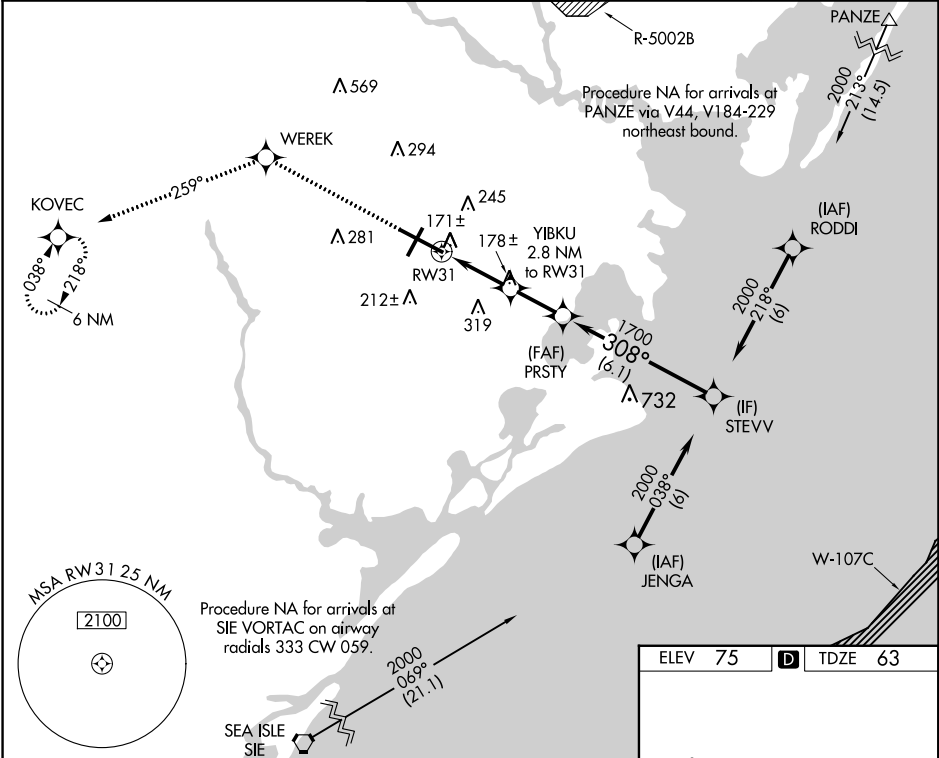
# RNAV (GPS) Y RWY 31

ATLANTIC CITY INTL (ACY)

RNP APCH - GPS.  
 For uncompensated Baro-VNAV systems, LNAV/VNAV NA below -15°C (5°F) or above 48°C (118°F).  
 ASR

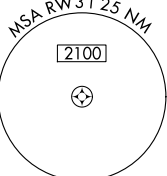
MISSED APPROACH: Climb to 2000 direct WEREK and on track 259° to KOVEC and hold.

ATIS <b>125.725 316.15</b>	ATLANTIC CITY APP CON <b>124.6 327.125</b>	ATLANTIC CITY TOWER <b>120.3 239.0</b>	GND CON <b>121.9 284.6</b>	CLNC DEL <b>127.85 353.775</b>
-------------------------------	---	---	-------------------------------	-----------------------------------



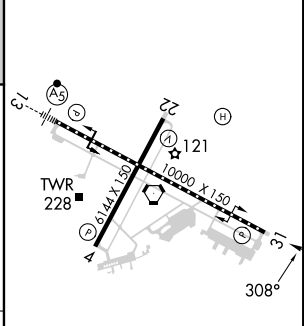
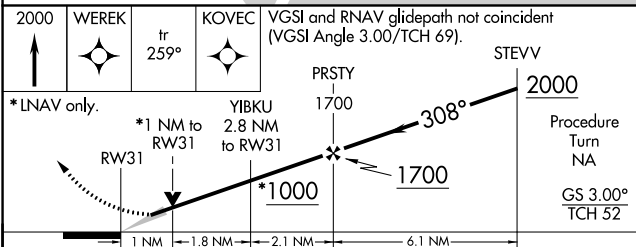
NE-2, 18 APR 2024 to 16 MAY 2024

NE-2, 18 APR 2024 to 16 MAY 2024



Procedure NA for arrivals at SIE VORTAC on airway radials 333 CW 059.  
 SEA ISLE SIE  
 2000 069° (21.1)

ELEV 75	<b>D</b>	TDZE 63
---------	----------	---------



CATEGORY	A	B	C	D	E
LPV DA		263/40	200 (200-¾)		
LNAV/VNAV DA		421/60	358(400-1¼)		
LNAV MDA	440/50	377 (400-1)		440/60	377 (400-1¼)
CIRCLING	540-1 465 (500-1)	600-1 525 (600-1)	620-1½ 545 (600-1½)	640-2 565 (600-2)	760-2½ 685 (700-2½)

Procedure Turn NA  
 GS 3.00°  
 TCH 52  
 TDZ/CL Rwy 13  
 HIRL Rwy 4-22 and 13-31  
 REIL Rwy 31