

LOC I-AOD <b>109.7</b>	APP CRS <b>078°</b>	Rwy Idg 11200 10200	8L 8R
		TDZE 944 936	
		Apt Elev 944 944	

# ILS or LOC RWY 8L

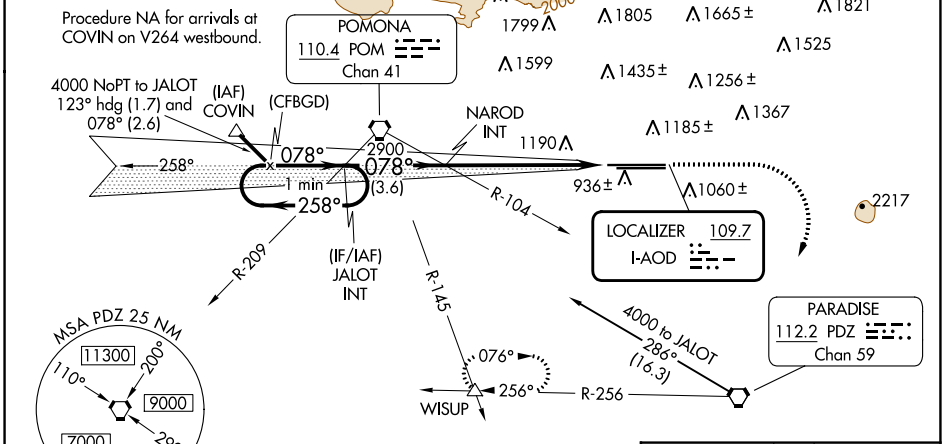
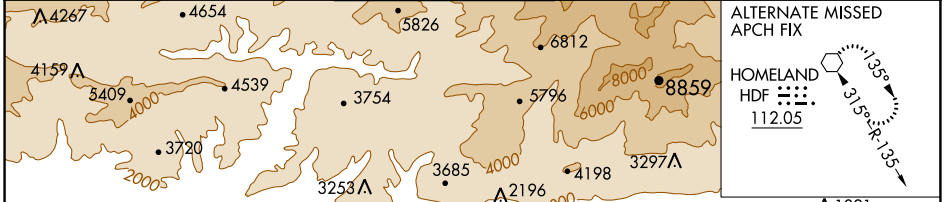
ONTARIO INTL (ONT)

**⚠** Circling NA north of Rwy 8L-26R.  
**⚠** \*RVR 1800 authorized with the use of FD or AP or HUD to DA.

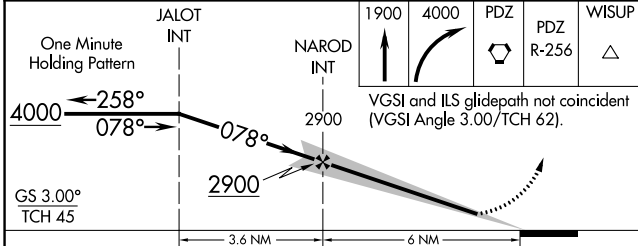
MALSR Rwy 8L

MISSED APPROACH: Climb to 1900 then climbing right turn to 4000 direct PDZ VORTAC then on PDZ R-256 to WISUP INT and hold.

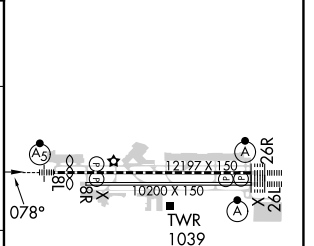
D-ATIS <b>124.25</b>	SOCAL APP CON <b>127.0 318.2</b>	ONTARIO TOWER <b>120.6 360.775</b>	GND CON <b>121.9 257.8</b>	CLNC DEL <b>132.9</b>	CPDLC
-------------------------	-------------------------------------	---------------------------------------	-------------------------------	--------------------------	-------



ELEV 944	TDZE 8L 944	TDZE 8R 936
----------	-------------	-------------



CATEGORY	A	B	C	D
S-ILS 8L*	1144/24 200 (200-½)			
S-LOC 8L	1440/24 496 (500-½)		1440/50 496 (500-1)	
SIDESTEP 8R	1440-1 504 (500-1)		1440-1⅜ 504 (500-1⅜)	
<b>C</b> CIRCLING	1440-1 496 (500-1)		1540-1½ 596 (600-1½) 1600-2 656 (700-2)	



TDZ/CL Rwy 8L, 26R and 26L					
HIRL Rwy 8L-26R and 8R-26L					
FAF to MAP 6 NM					
Knots	60	90	120	150	180
Min:Sec	6:00	4:00	3:00	2:24	2:00

SW-3, 18 APR 2024 to 16 MAY 2024

SW-3, 18 APR 2024 to 16 MAY 2024