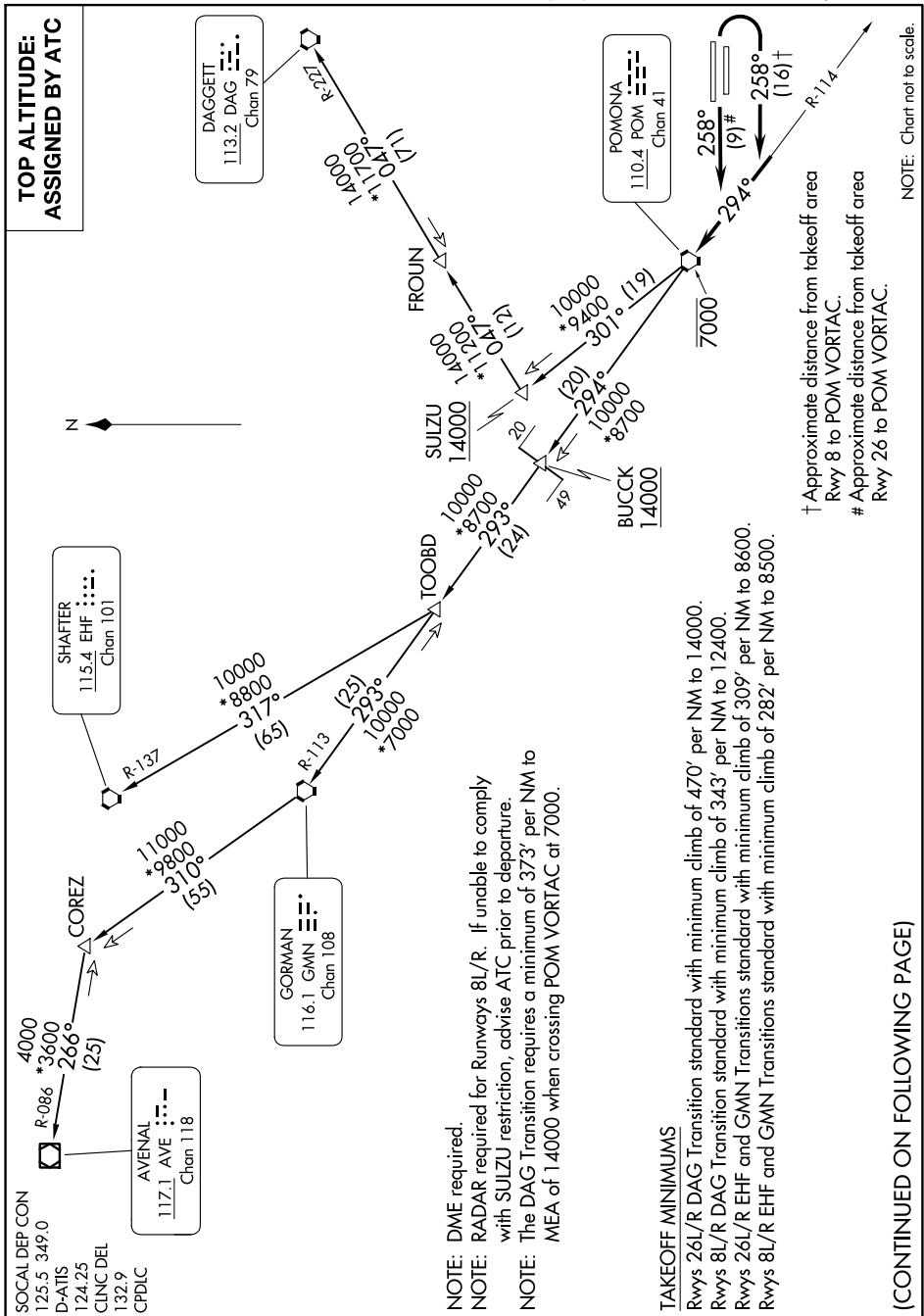


# POMONA ONE DEPARTURE

AL-965 (FAA)

ONTARIO INTL (ONT)  
ONTARIO, CALIFORNIA

SW-3, 18 APR 2024 to 16 MAY 2024



**TOP ALTITUDE:  
ASSIGNED BY ATC**



NOTE: DME required.  
 NOTE: RADAR required for Runways 8L/R. If unable to comply with SULZU restriction, advise ATC prior to departure.  
 NOTE: The DAG Transition requires a minimum of 373' per NM to MEA of 14000 when crossing POM VORTAC at 7000.

### TAKEOFF MINIMUMS

Runws 26L/R DAG Transition standard with minimum climb of 470' per NM to 14000.  
 Runws 8L/R DAG Transition standard with minimum climb of 343' per NM to 12400.  
 Runws 26L/R EHF and GMN Transitions standard with minimum climb of 309' per NM to 8600.  
 Runws 8L/R EHF and GMN Transitions standard with minimum climb of 282' per NM to 8500.

† Approximate distance from takeoff area  
 Runw 8 to POM VORTAC.  
 # Approximate distance from takeoff area  
 Runw 26 to POM VORTAC.

NOTE: Chart not to scale.

(CONTINUED ON FOLLOWING PAGE)

SW-3, 18 APR 2024 to 16 MAY 2024

# POMONA ONE DEPARTURE

ONTARIO, CALIFORNIA  
ONTARIO INTL (ONT)