

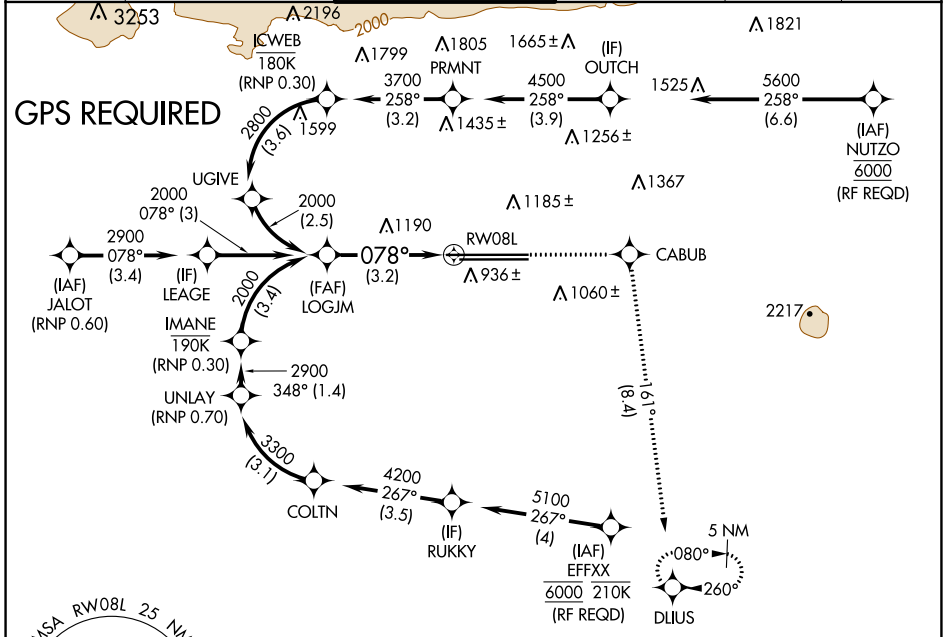
APP CRS	Rwy Idg	11200
078°	TDZE	944
	Apt Elev	944

RNAV (RNP) Z RWY 8L

ONTARIO INTL (ONT)

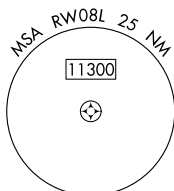
 	For uncompensated Baro-VNAV systems, procedure NA below 2°C (36°F) or above 54°C (130°F).	MALSR 	MISSED APPROACH: Climb to 5300 direct CABUB on track 161° to DLIUS and hold, continue climb-in-hold to 5300.

D-ATIS 124.25	SOCAL APP CON 127.0 318.2	ONTARIO TOWER 120.6 360.775	GND CON 121.9 257.8	CLNC DEL 132.9	CPDLC
-------------------------	-------------------------------------	---------------------------------------	-------------------------------	--------------------------	-------

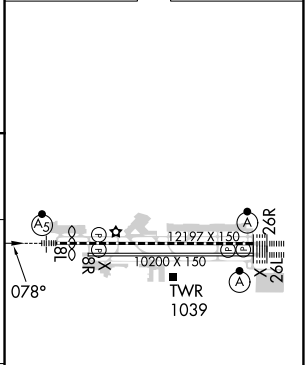
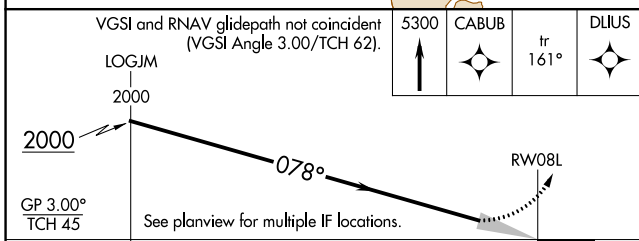


SW-3, 18 APR 2024 to 16 MAY 2024

SW-3, 18 APR 2024 to 16 MAY 2024



ELEV 944	TDZE 944
----------	----------



CATEGORY	A	B	C	D
RNP 0.30 DA	1490-13 ³ / ₈		546 (600-1 ³ / ₈)	
AUTHORIZATION REQUIRED				

TDZ/CL Rwys 8L, 26R and 26L
HIRL Rwys 8L-26R and 8R-26L