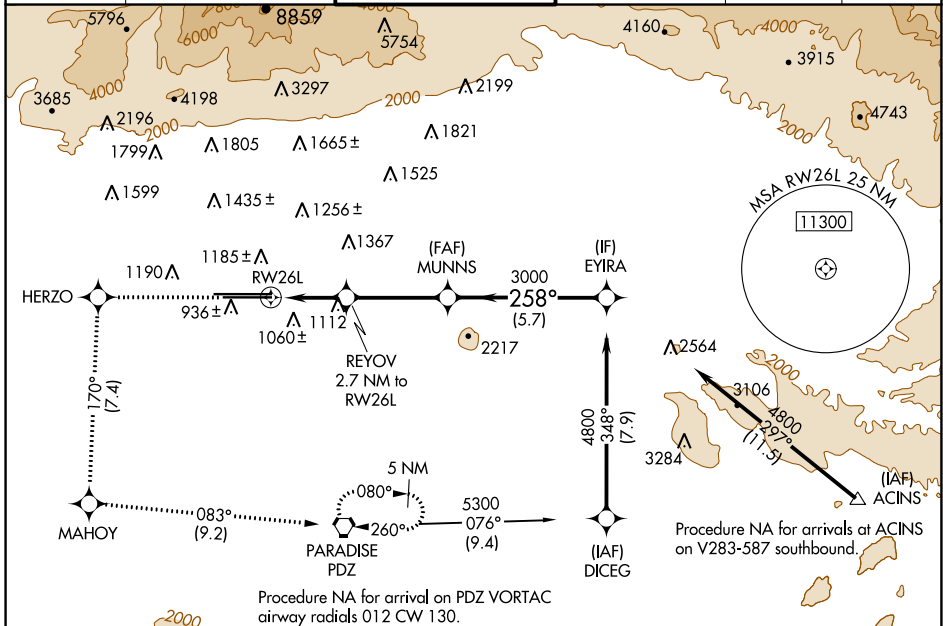


WAAS CH 90407 W26B	APP CRS 258°	Rwy Idg 10200 TDZE 926 Apt Elev 944
--	------------------------	--

RNAV (GPS) Y RWY 26L

ONTARIO INTL (ONT)

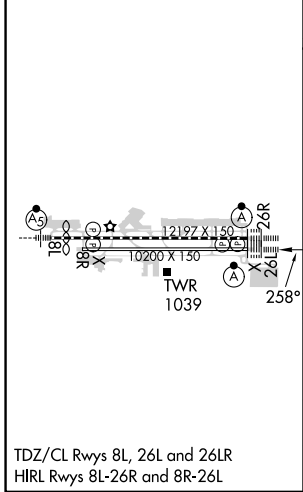
RNP APCH - GPS.		ALSF-2	MISSED APPROACH: Climb to 4700 direct HERZO and on track 170° to MAHOY and on track 083° to PDZ VORTAC, continue climb in hold to 4700.		
<p>▼ Circling NA north of Rwy 8L-26R. For uncompensated Baro-VNAV systems, procedure NA below 2°C or above 54°C. For inop ALS, increase all Cats LNAV/VNAV visibility to RVR 5500.</p>					
D-ATIS 124.25	SOCAL APP CON 127.0 318.2	ONTARIO TOWER 120.6 360.775	GND CON 121.9 257.8	CLNC DEL 132.9	CPDLC



SW-3, 18 APR 2024 to 16 MAY 2024

SW-3, 18 APR 2024 to 16 MAY 2024

ELEV 944	D	TDZE 926
-----------------	----------	-----------------



4700	HERZO	MAHOY	PDZ	VGSi and RNAV glidepath not coincident (VGSi Angle 3.00/TCH 74).	
↑	tr 170°	tr 083°		MUNNNS	EYIRA
		REYOV 2.7 NM to RWY 26L		3000	4800
		1.2 NM to RWY 26L		1840	GP 3.00° TCH 58
		1.2 NM	1.5 NM	3.6 NM	5.7 NM
CATEGORY	A	B	C	D	
LPV DA	1126/18		200 (200-½)		
LNAV/VNAV DA	1267/30		341 (400-⅙)		
LNAV MDA	1380/24 454 (500-½)		1380/45 454 (500-⅔)		
C CIRCLING	1400-1 456 (500-1)		1500-1½ 556 (600-1½)		1540-2 596 (600-2)