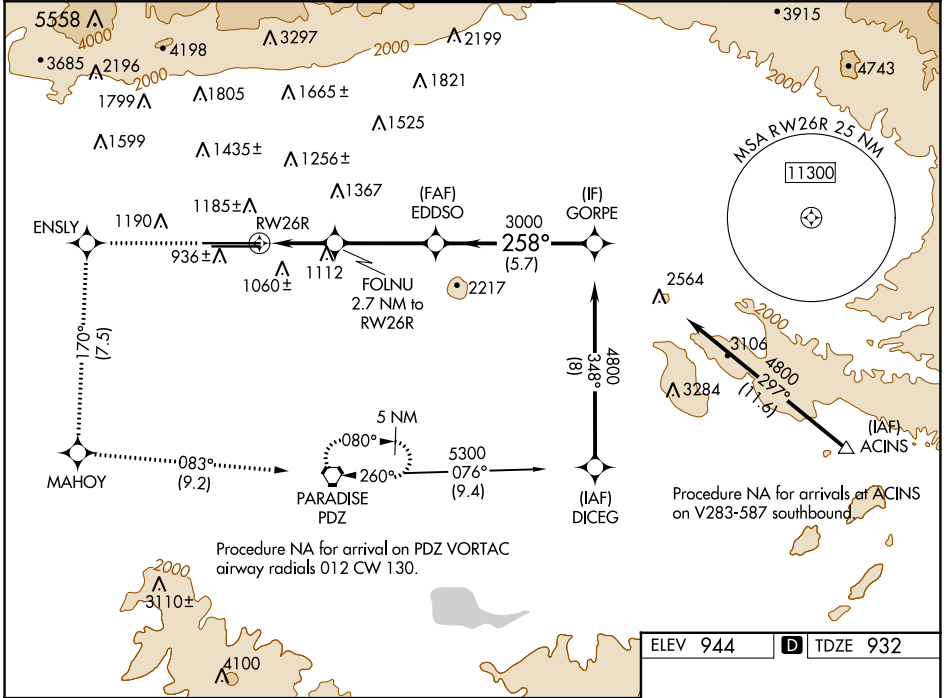


RNAV (GPS) Y RWY 26R

ONTARIO INTL (ONT)

WAAS CH 53406 W26A	APP CRS 258°	Rwy Idg 12197 TDZE 932 Apt Elev 944
--	------------------------	--

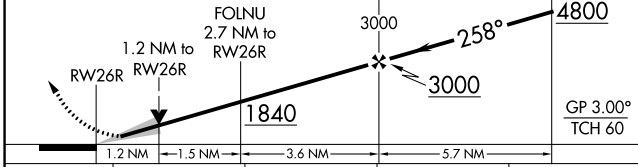
RNP APCH - GPS.		ALSIF-2	MISSED APPROACH: Climb to 4700 direct ENSLY and on track 170° to MAHOY and on track 083° to PDZ VORTAC and hold, continue climb-in-hold to 4700.					
▼ Circling NA north of Rwy 8L-26R. For uncompensated Baro-VNAV systems, procedure NA below 2°C or above 54°C.			D-ATIS 124.25	SOCAL APP CON 127.0 318.2	ONTARIO TOWER 120.6 360.775	GND CON 121.9 257.8	CLNC DEL 132.9	CPDLC



SW-3, 18 APR 2024 to 16 MAY 2024

SW-3, 18 APR 2024 to 16 MAY 2024

4700	↑	ENSLY	tr 170°	MAHOY	tr 083°	PDZ	VGSI and RNAV glidepath not coincident (VGSI Angle 3.00/TCH 75).
------	---	-------	---------	-------	---------	-----	--



ELEV 944	D TDZE 932			
LPV DA	A	B	C	D
1380/24	448 (500-½)	1132/18	200 (200-½)	
LNNAV/VNAV DA		1267/55	335 (400-1)	
LNNAV MDA	1380/24	448 (500-½)	1380/45	448 (500-¾)
C CIRCLING	1400-1	456 (500-1)	1500-1½ 556 (600-1½)	1540-2 596 (600-2)
TDZ/CL Rwys 8L, 26L and 26R HIRL Rwys 8L-26R and 8R-26L				