

WAAS CH <b>70329</b> <b>W08A</b>	APP CRS <b>078°</b>	Rwy Idg <b>10200</b> TDZE <b>936</b> Apt Elev <b>944</b>
--	------------------------	--

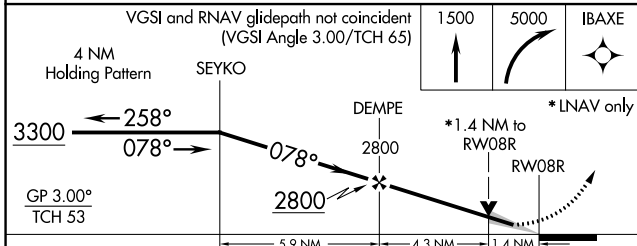
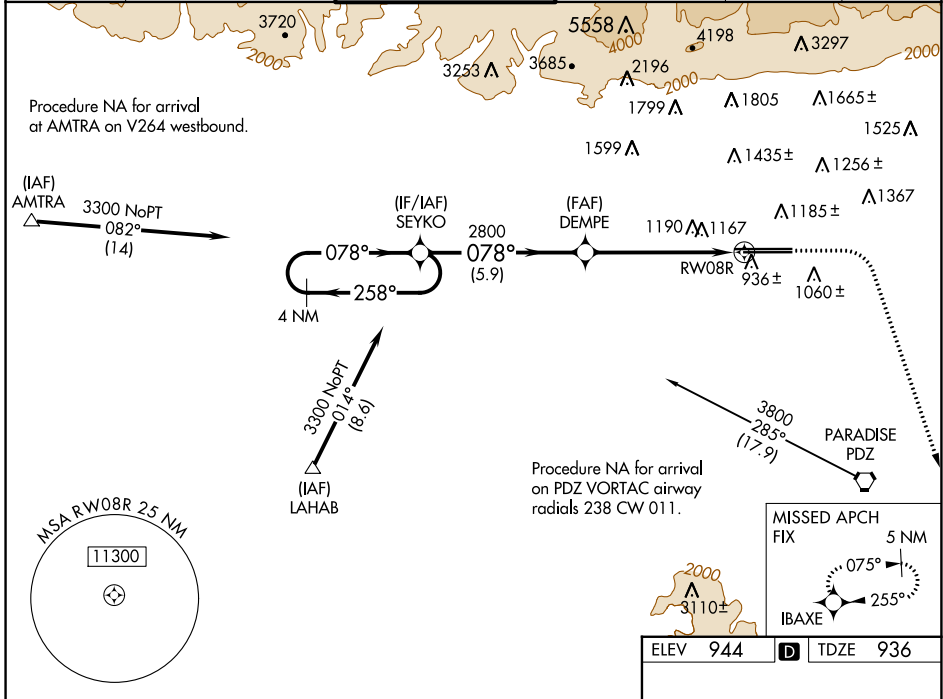
# RNAV (GPS) Y RWY 8R

ONTARIO INTL (ONT)

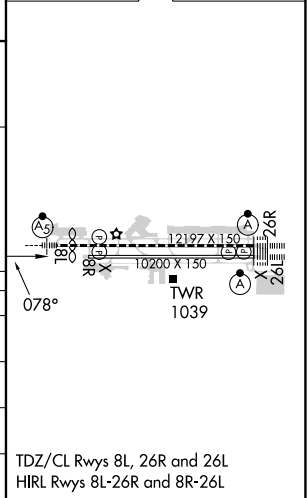
**▽** For uncompensated Baro-VNAV systems, procedure NA below 2° C (36°F) or above 54°C (130°F). Circling NA north of Rwy 8L-26R. DME/DME RNP-0.3 NA.

MISSED APPROACH: Climb to 1500 then climbing right turn to 5000 direct IBAXE and hold, continue climb-in-hold to 5000.

D-ATIS <b>124.25</b>	SOCAL APP CON <b>127.0 318.2</b>	ONTARIO TOWER <b>120.6 360.775</b>	GND CON <b>121.9 257.8</b>	CLNC DEL <b>132.9</b>	CPDLC
-------------------------	-------------------------------------	---------------------------------------	-------------------------------	--------------------------	-------



ELEV 944	<b>D</b> TDZE 936
----------	-------------------



CATEGORY	A	B	C	D
LPV DA	1220/45		284 (300-7%)	
LNNAV/VNAV DA	1494-1 7/8		558 (600-1 7/8)	
LNNAV MDA	1440/55 504 (500-1)		1440-1 3/8 504 (500-1 3/8)	
<b>C</b> CIRCLING	1440-1 496 (500-1)		1540-1 1/2 596 (600-1 1/2) 1600-2 656 (700-2)	

SW-3, 18 APR 2024 to 16 MAY 2024

SW-3, 18 APR 2024 to 16 MAY 2024