

LOC/DME I-BBJ 110.9 Chan 46	APP CRS 264°	Rwy Idg 5500 TDZE 671 Apt Elev 672
---	------------------------	---

ILS or LOC RWY 26

KEOKUK MUNI (EOK)

DME required for LOC only.

NA Circling Rwy 32 NA at night. Inop table does not apply to S-ILS 26. VDP NA when using Burlington altimeter setting. When local altimeter setting not received, use Burlington altimeter setting and increase S-ILS 26 DA to 927 feet, increase all MDAs 60 feet and Circling visibility Cat C ¼ SM. For inop ALS, increase S-LOC 26 Cats A and B visibility to 1 SM, and Cat C to ¾ SM. For inop ALS when using Burlington altimeter setting, increase S-LOC 26 all Cats visibility to 1 SM.

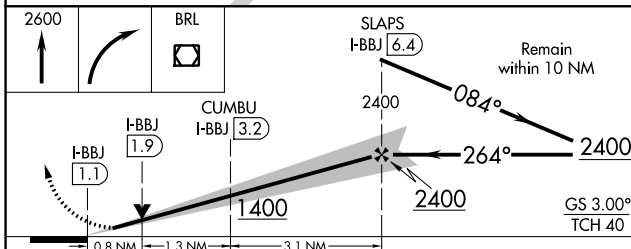
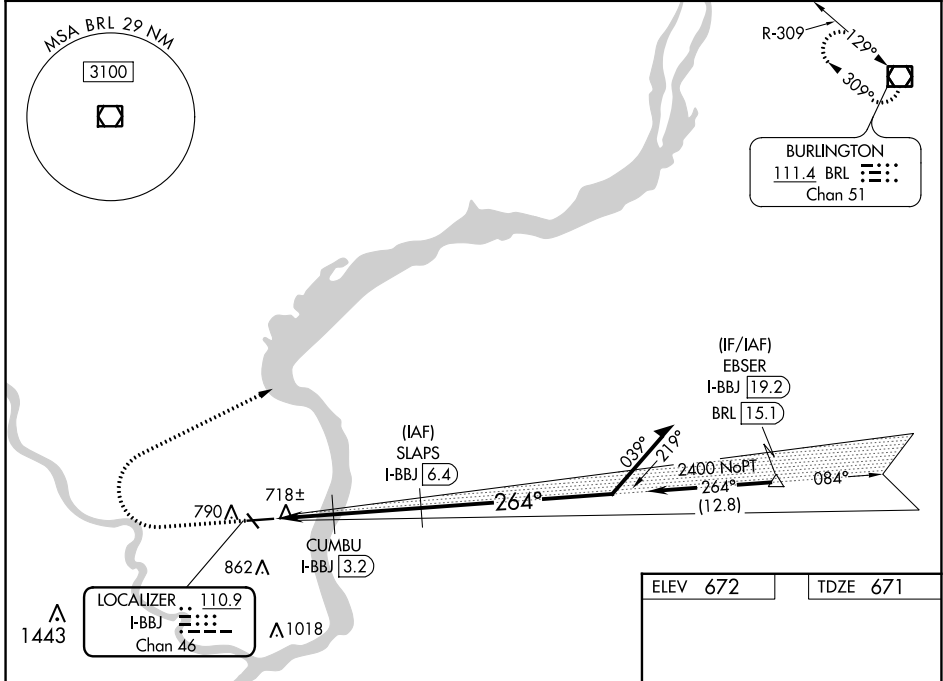
MALSR

MISSED APPROACH:
Climb to 2600 then right turn direct BRL VOR/DME and hold.

AWOS-3
118.375

KANSAS CITY CENTER
126.225 317.775

UNICOM
122.8 (CTAF) 0



ELEV 672	TDZE 671
----------	----------

REIL Rwy 8, 14, and 32 0

MIRL Rwy 8-26 and 14-32 0

CATEGORY	A	B	C	D
S-ILS 26	871-¾	200 (200-¾)		NA
S-LOC 26	980-¾	309 (400-¾)		NA
CIRCLING	1180-1 508 (600-1)	1220-1 548 (600-1)	1220-1½ 548 (600-1½)	NA

NC-3, 18 APR 2024 to 16 MAY 2024

NC-3, 18 APR 2024 to 16 MAY 2024