

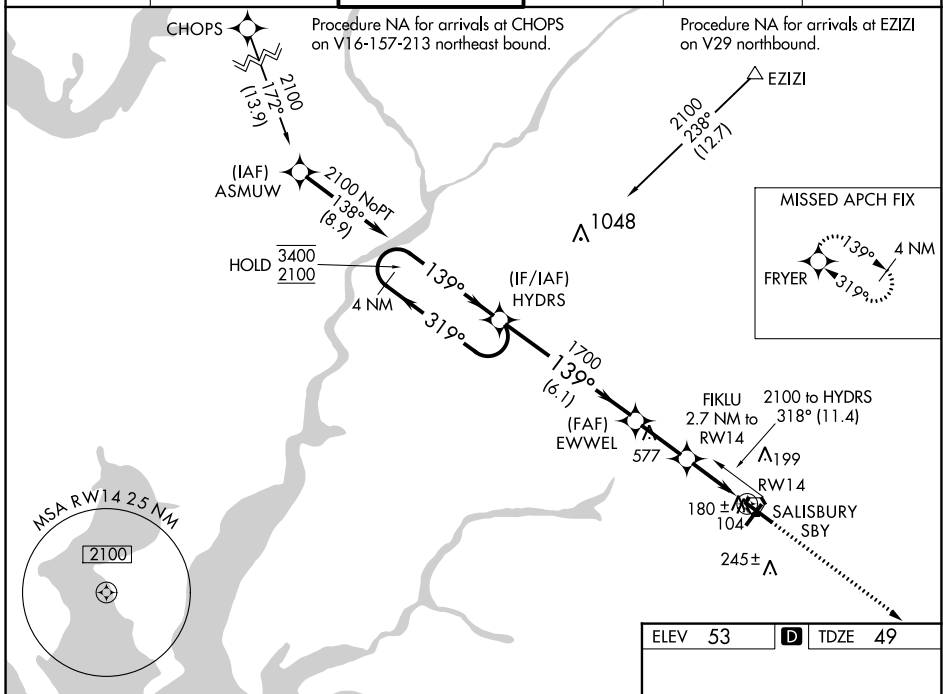
WAAS CH <b>56320</b> <b>W14A</b>	APP CRS <b>139°</b>	Rwy Idg TDZE Apt Elev	<b>6400</b> <b>49</b> <b>53</b>
--	------------------------	-----------------------------	---------------------------------------

# RNAV (GPS) RWY 14

SALISBURY-OCEAN CITY WICOMICO RGNL (SBY)

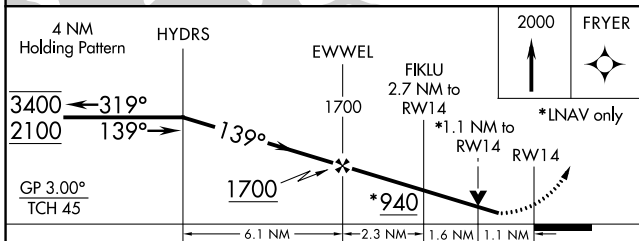
RNP APCH.					MISSED APPROACH: Climb to 2000 direct FRYER and hold.	
<p><b>T</b> Rwy 14 helicopter visibility reduction below 3/4 SM NA.  <b>A</b> For uncompensated Baro-VNAV systems, LNAV/VNAV NA below -16° C or above 54° C.</p>						

ASOS <b>118.325</b>	PATUXENT APP CON ★ <b>127.95 314.0</b>	SALISBURY TOWER ★ <b>119.425</b> (CTAF) <b>0</b>	GND CON <b>123.775</b>	CLNL DEL ★ <b>123.775</b>	UNICOM <b>122.95</b>
------------------------	---	---	---------------------------	------------------------------	-------------------------



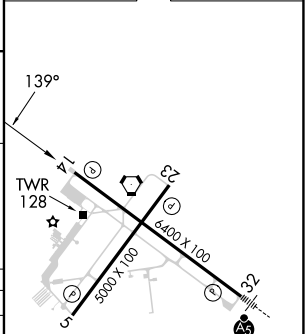
NE-3, 18 APR 2024 to 16 MAY 2024

NE-3, 18 APR 2024 to 16 MAY 2024



ELEV 53	<b>D</b> TDZE 49
---------	------------------

CATEGORY	A	B	C	D
LPV DA	363-1 314 (400-1)			
LNAV/ VNAV DA	453-1½ 404 (400-1½)			
LNAV MDA	440-1 391 (400-1)	440-1½ 391 (400-1½)		440-1¼ 391 (400-1¼)
<b>C</b> CIRCLING	480-1 427 (500-1)	520-1 467 (500-1)	560-1½ 507 (600-1½)	700-2 647 (700-2)



REIL Rwy 5, 14 and 23  
MIRL Rwy 5-23  
HIRL Rwy 14-32