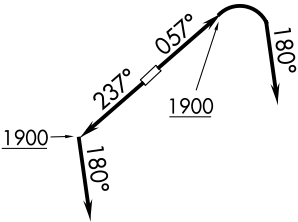


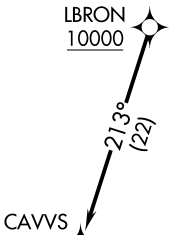
D-ATIS
119.95
CLNC DEL
121.85 (when tower closed)
GND CON
121.85
COUNTY TOWER ★
118.5 (CTAF)
CLEVELAND DEP CON
125.35 346.325

TOP ALTITUDE:
ASSIGNED BY ATC



NOTE: RADAR required.
NOTE: RNAV 1.
NOTE: DME/DME/IRU or GPS required.

TAKEOFF MINIMUMS:
Rwys 6, 24: Standard with a minimum climb
of 500' per NM to 1400.



APPLETON
APE

NOTE: Chart not to scale.



DEPARTURE ROUTE DESCRIPTION

TAKEOFF RUNWAY 6: Climb on heading 057° to 1900, then right turn heading 180° or as assigned by ATC for RADAR vectors to cross LBRON at or above 10000, thence....
TAKEOFF RUNWAY 24: Climb on heading 237° to 1900, then on heading 180° or as assigned by ATC for RADAR vectors to cross LBRON at or above 10000, thence....

....on track 213° to CAVVS, then on (transition).
Maintain altitude assigned by ATC, expect
filed altitude ten minutes after departure.

APPLETON TRANSITION (CAVVS4.APE)