

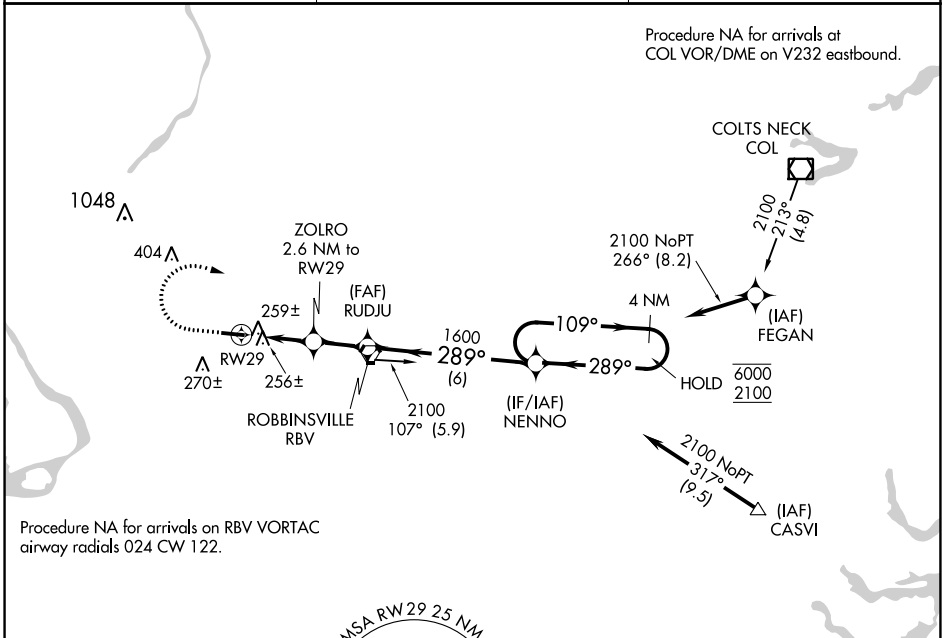
APP CRS	Rwy Idg	<b>3975</b>
<b>289°</b>	TDZE	<b>118</b>
	Apt Elev	<b>118</b>

# RNAV (GPS) RWY 29

TRENTON-ROBBINSVILLE (N87)

RNP APCH.	MISSED APPROACH: Climb to 1000, then climbing right turn to 2100 direct NENNO and hold.
<p>Procedure NA at night. Rwy 29 helicopter visibility reduction below 1 SM NA. Use Wrightstown altimeter setting.</p>	

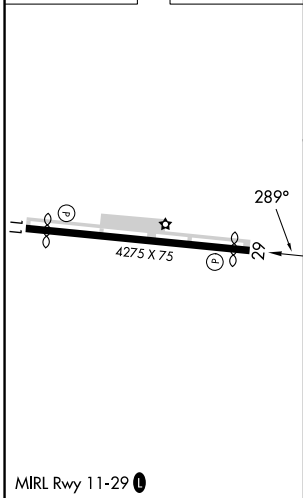
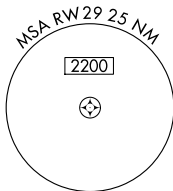
MC GUIRE APP CON <b>126.475 363.8</b>	UNICOM <b>123.0 (CTAF)</b>	<b>123.3 0</b>
------------------------------------------	-------------------------------	----------------



NE-2, 18 APR 2024 to 16 MAY 2024

NE-2, 18 APR 2024 to 16 MAY 2024

ELEV 118	TDZE 118
----------	----------



1000	2100	NENNO	Visual Segment - Obstacles.		
			RUDJU	NENNO 4 NM Holding Pattern	
			ZOLRO 2.6 NM to RWY 29	109° → 6000	
			RWY 29	← 289° 2100	
			980	1600	
			2.6 NM	1.9 NM	6 NM
CATEGORY	A	B	C	D	
LNAV MDA	540-1	422 (500-1)	540-1½	422 (500-1½)	
CIRCLING	680-1	562 (600-1)	680-1½	760-2	
			562 (600-1½)	642 (700-2)	