

CLOVIS, NEW MEXICO

AL-5144 (FAA)

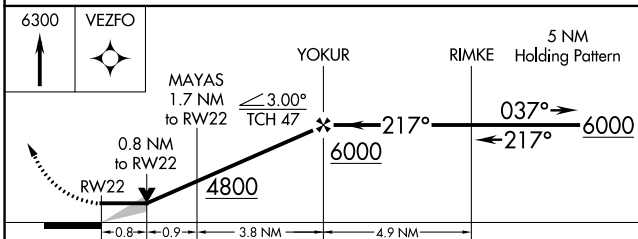
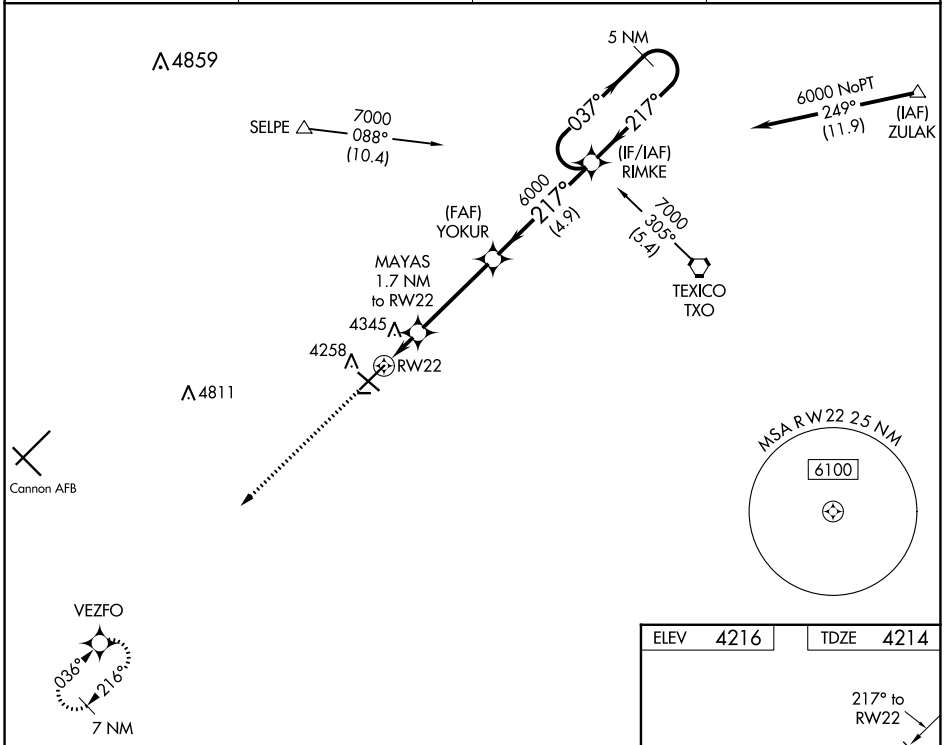
22139

WAAS CH <b>99637</b> <b>W22A</b>	APP CRS <b>217°</b>	Rwy Idg TDZE Apt Elev	<b>7200</b> <b>4214</b> <b>4216</b>
----------------------------------------	------------------------	-----------------------------	-------------------------------------------

# RNAV (GPS) RWY 22

CLOVIS RGNL (CVN)

<p><b>⚠</b> DME/DME RNP-0.3 NA. When local altimeter setting not received, use Cannon AFB altimeter setting and increase all MDA 40 feet; increase LP Cat C/D visibility ¼ mile; increase LNAV Cat C/D visibility ½ mile. VDP NA when using Cannon AFB altimeter setting.</p>		<p>MISSED APPROACH: Climb to 6300 direct VEZFO and hold.</p>	
AWOS-3PT <b>135.375</b>	CANNON APP CON <b>118.425 352.1</b>	CLNC DEL <b>119.0</b>	UNICOM <b>122.8 (CTAF) 0</b>



ELEV	4216	TDZE	4214
------	------	------	------

**RWY 22**  
 2442 X 75  
 5687 X 100  
 2442 X 75 Ultralight Rwy

REIL Rwy 12 and 30  
 MRL Rwy 4-22 and 12-30

CATEGORY		A	B	C	D
LP	MDA	4520-1	306 (400-1)	4520-7/8	306 (400-7/8)
LNAV	MDA	4620-1	406 (500-1)	4620-1 1/8	406 (500-1 1/8)
<b>C</b>	CIRCLING	4680-1	464 (500-1)	4700-1 1/2 484 (500-1 1/2)	4820-2 604 (700-2)

CLOVIS, NEW MEXICO  
 Amdt 1 15OCT15

34°26'N-103°05'W

# RNAV (GPS) RWY 22

CLOVIS RGNL (CVN)

SW-1, 18 APR 2024 to 16 MAY 2024

SW-1, 18 APR 2024 to 16 MAY 2024