

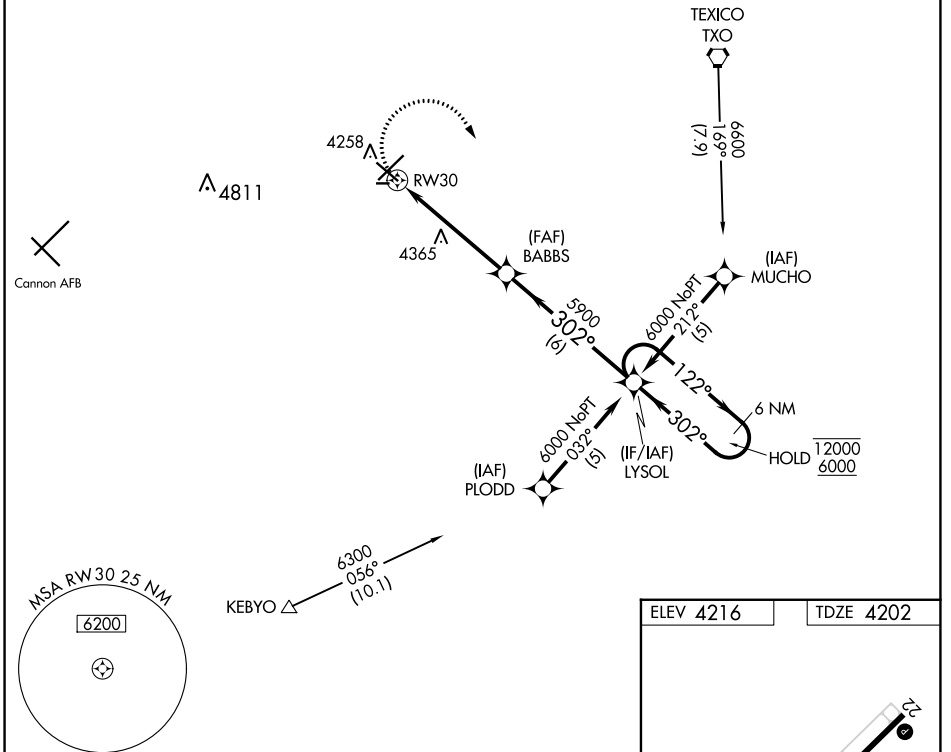
APP CRS	Rwy Idg	5697
302°	TDZE	4202
	Apt Elev	4216

RNAV (GPS) RWY 30

CLOVIS RGNL (CVN)

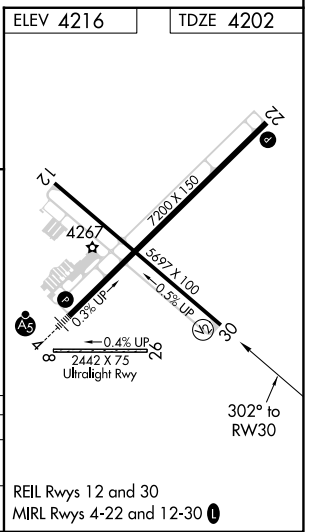
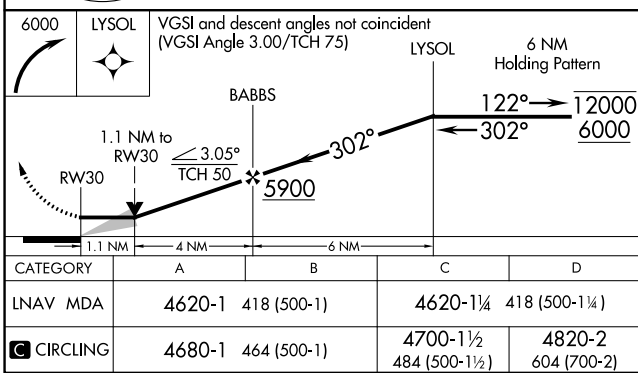
RNP APCH.		MISSED APPROACH: Climbing right turn to 6000 direct LYSOL and hold.	
CAUTION: Cannon AFB 12 NM WSW, heavy USAF fighter traffic.			
AWOS-3PT 135.375	CANNON APP CON 118.425 352.1	CLNC DEL 119.0	UNICOM 122.8 (CTAF) ①

Procedure NA for arrivals at TXO VORTAC via V62 northwest bound.



SW-1, 18 APR 2024 to 16 MAY 2024

SW-1, 18 APR 2024 to 16 MAY 2024



REIL Rwy 12 and 30
MIRL Rwy 4-22 and 12-30 ①