

WAAS CH <b>58016</b> <b>W31A</b>	APP CRS <b>308°</b>	Rwy Idg TDZE Apt Elev	<b>5001</b> <b>1885</b> <b>1915</b>
--	------------------------	-----------------------------	---

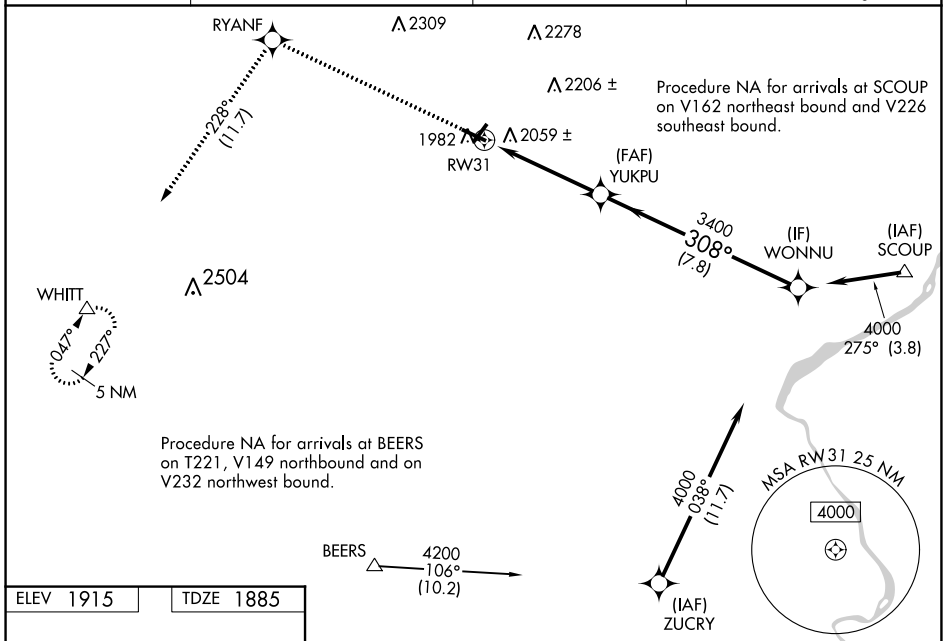
# RNAV (GPS) RWY 31

POCONO MOUNTAINS RGNL (MPO)

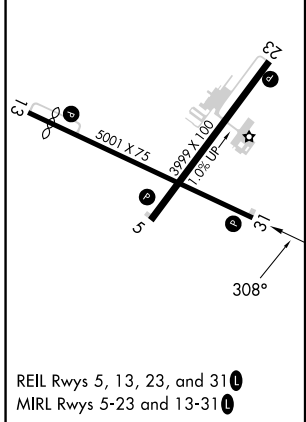
**⚠** Baro-VNAV NA when using Wilkes-Barre/Scranton altimeter setting. For uncompensated Baro-VNAV systems, LNAV/VNAV NA below -18°C (0°F) or above 54°C (130°F).  
**⚠** Rwy 31 helicopter visibility reduction below ¾ SM NA. DME/DME RNP-0.3 NA.  
 When local altimeter setting not received, use Wilkes-Barre/Scranton altimeter setting: increase LPV DA to 2403 feet and visibility ¼ SM, LNAV/VNAV DA to 2446 feet and visibility ¾ SM; increase all MDAs 180 feet and visibility LNAV Cat C/D ¾ SM and Circling Cat C/D ½ SM. Circling Rwy 23 NA at night.

MISSED APPROACH: Climb to 4200 direct RYANF and on track 228° to WHITT and hold.

ASOS <b>120.275</b>	WILKES-BARRE APP CON <b>126.3 256.7</b>	CLNC DEL <b>125.3</b>	UNICOM <b>122.7 (CTAF) 0</b>
------------------------	--	--------------------------	---------------------------------



ELEV 1915	TDZE 1885
-----------	-----------



4200	RYANF	WHITT	VGSI and RNAV glidepath not coincident (VGSI Angle 3.50/TCH 40).	
↑	✧	tr 228°		
			WONNU	
			4000	
			GP 3.00° TCH 55	
CATEGORY	A	B	C	D
LPV DA	2224-1½ 339 (400-1½)			
LNAV/VNAV DA	2267-1¼ 382 (400-1¼)			
LNAV MDA	2320-1	435 (500-1)	2320-1¾	435 (500-1¾)
<b>C</b> CIRCLING	2420-1 505 (600-1)	2500-1 585 (600-1)	2600-2 685 (700-2)	2660-2½ 745 (800-2½)

NE-4, 18 APR 2024 to 16 MAY 2024

NE-4, 18 APR 2024 to 16 MAY 2024