

FORT EUSTIS, VIRGINIA

# COPTER RNAV (GPS) RWY 14

APCH CRS	Rwy Idg	3025
139°	TDZE	11
	Arpt Elev	11

[USA]

FELKER AAF (KFAP)

RNP APCH - GPS

When local altimeter setting not received, use Newport News/Williamsburg Intl altimeter setting.  
 VDP NA when using Newport News/Williamsburg Intl altimeter setting.  
 Procedure NA at night.

ODALS

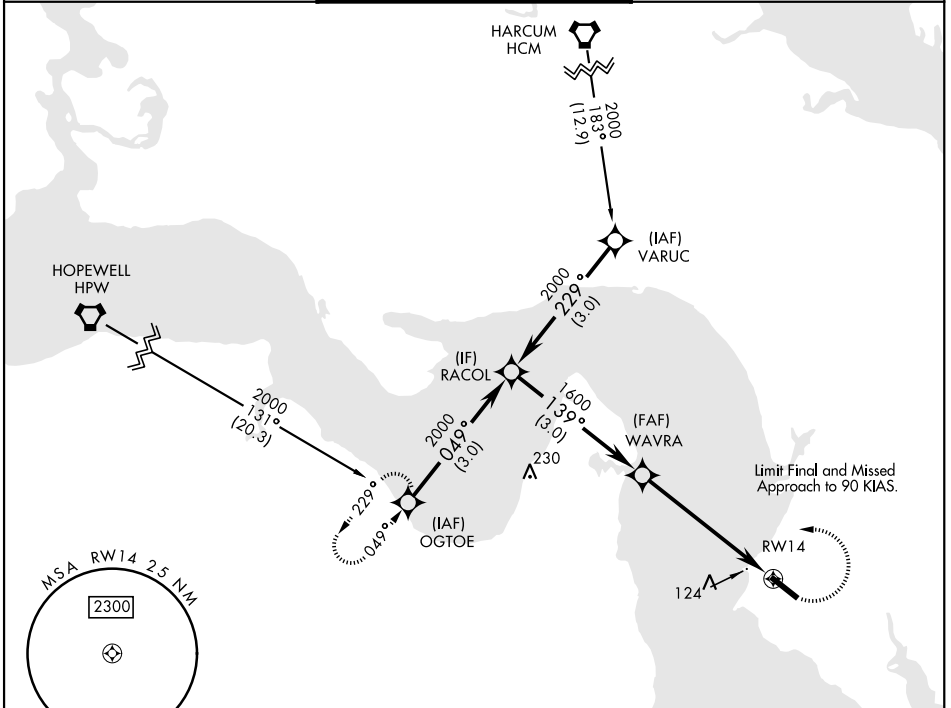


MISSED APPROACH: Climbing left turn to 2000 direct OGTOE and hold.

NORFOLK APP CON  
**125.7 335.625**

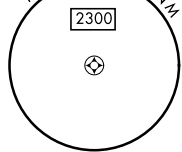
FELKER TOWER ★  
**126.3 (CTAF) 0 269.25**

GND CON  
**121.35 229.4**



NE-3, 18 APR 2024 to 16 MAY 2024

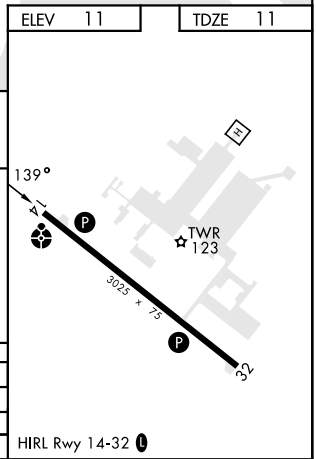
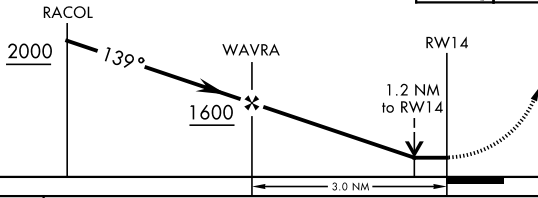
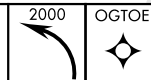
NE-3, 18 APR 2024 to 16 MAY 2024



177

### NOT FOR CIVIL USE

VGSI and Descent Angles not coincident (VGSI Angle 3.00/TCH 48).



CATEGORY	COPTER	
LNAV MDA	420-¾	409 (500-¾)
NEWPORT NEWS/WILLIAMSBURG INTL ALTIMETER		
LNAV MDA	440-¾	429 (500-¾)

HIRL Rwy 14-32

FORT EUSTIS, VIRGINIA

37°08'N-76°37'W

FELKER AAF (KFAP)

Amdt 1 30NOV23

# COPTER RNAV (GPS) RWY 14