

# RNAV (GPS)-A

MORRISVILLE-STOWE STATE (MVL)

APP CRS	Rwy Idg	N/A
<b>051°</b>	TDZE	N/A
	Apt Elev	<b>733</b>

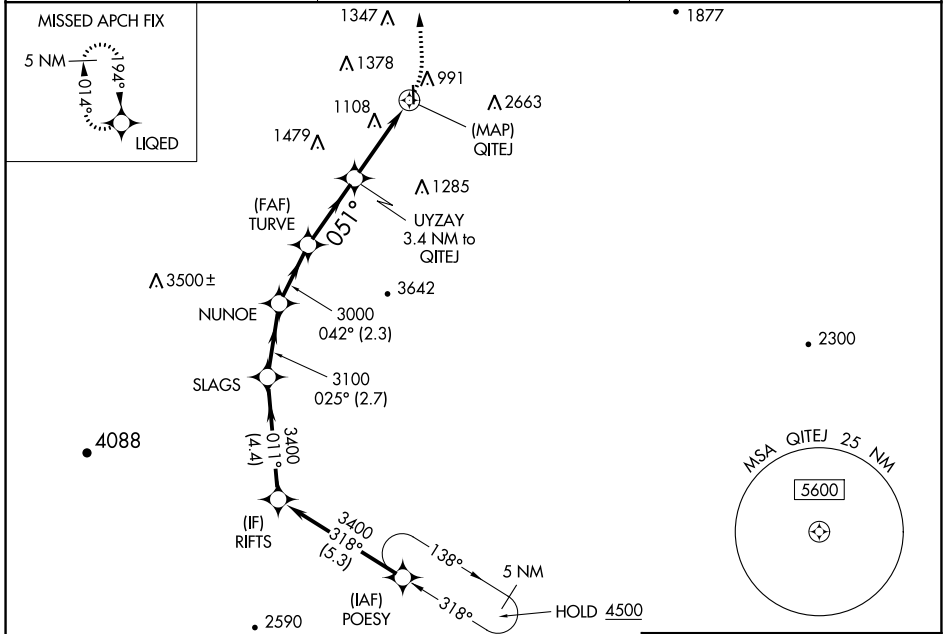
RNP APCH.

**⚠** Circling NA for Cat C east of Rwy 1-19. When local altimeter setting not received, use Burlington altimeter setting and increase all MDAs 120 feet.

**⚠** -20°C

MISSED APPROACH: Climbing left turn to 5600 direct LIQED and hold, continue climb-in-hold to 5600.

ASOS <b>135.625</b>	BOSTON CENTER <b>135.7 282.2</b>	UNICOM <b>122.8 (CTAF)</b> <b>①</b>
------------------------	-------------------------------------	--



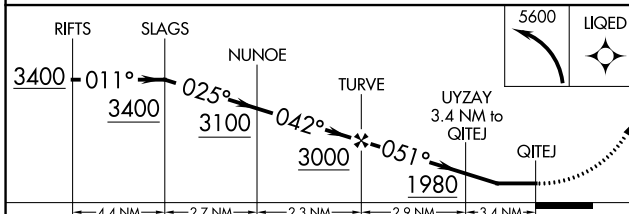
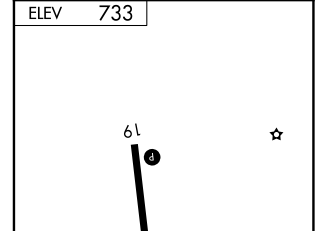
NE-1, 18 APR 2024 to 16 MAY 2024

NE-1, 18 APR 2024 to 16 MAY 2024

ELEV 733

Procedure NA for arrival on MPV VOR/DME airway radials 317 CW 037.

MONTPELIER MPV



CATEGORY	A	B	C	D
<b>Ⓢ</b> CIRCLING	1620-1¼ 887 (900-1¼)	1780-1½ 1047 (1100-1½)	1980-3 1247 (1300-3)	NA

REIL Rwy 1 and 19 **①**

HIRL Rwy 1-19 **①**

# RNAV (GPS)-A