

WAAS CH <b>63014</b> <b>W29A</b>	APP CRS <b>290°</b>	Rwy Idg TDZE Apt Elev	<b>5101</b> <b>1724</b> <b>1730</b>
----------------------------------------	------------------------	-----------------------------	-------------------------------------------

# RNAV (GPS) RWY 29

SCHUYLKILL COUNTY/JOE ZERBEY (Z<sub>ER</sub>)

RNP APCH - GPS

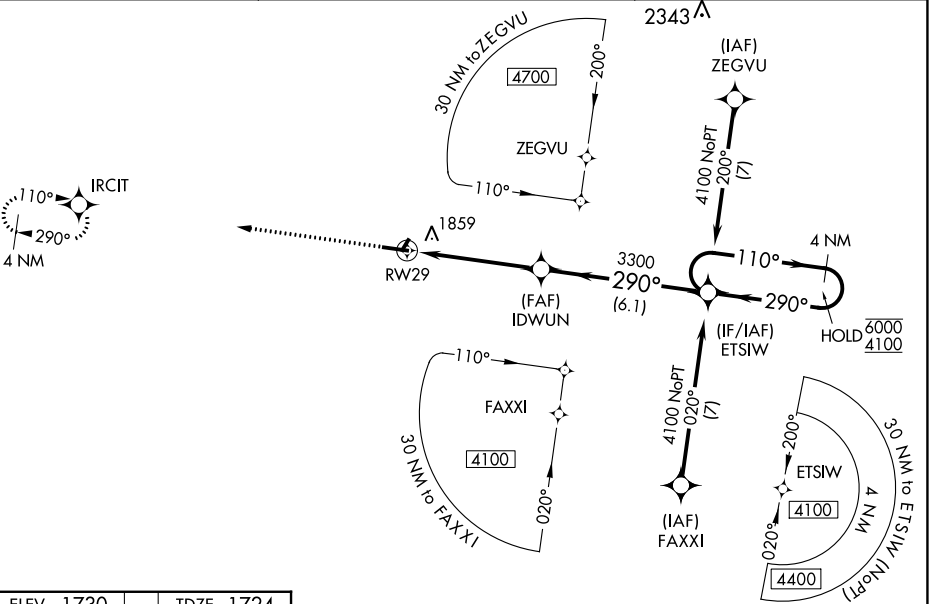
**NA** Circling NA to Rws 4 and 22. Baro-VNAV NA when using Selinsgrove altimeter setting.  
 For uncompensated Baro-VNAV systems, LNAV/VNAV NA below -18°C or above 54°C.  
 VDP NA when using Selinsgrove altimeter setting. When local altimeter setting not received,  
 use Selinsgrove altimeter setting: increase LPV DA to 2156 feet and visibility ½ SM;  
 LNAV/VNAV DA to 2376 feet and visibility ¾ SM; increase all MDAs 240 feet and  
 visibility LNAV Cats C/D ½ SM and Circling Cats C/D ½ SM.

**MISSED APPROACH:**  
Climb to 4000 direct  
IRCIT and hold.

AWOS-3  
**127.575**

HARRISBURG APP CON  
**118.25 269.45**

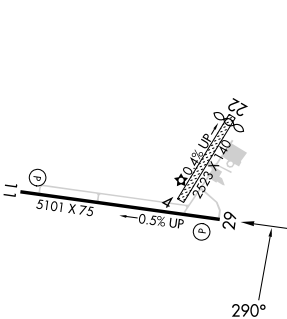
UNICOM  
**123.075** (CTAF) **U**



NE-4, 18 APR 2024 to 16 MAY 2024

NE-4, 18 APR 2024 to 16 MAY 2024

ELEV 1730	TDZE 1724
-----------	-----------



CATEGORY	A	B	C	D
LPV DA		1924-¾	200 (200-¾)	
LNAV/VNAV DA		2144-1½	420 (500-1½)	
LNAV MDA	2120-1	396 (400-1)	2120-1½	396 (400-1½)
<b>C</b> CIRCLING	2160-1 430 (500-1)	2180-1 450 (500-1)	2180-1½ 450 (500-1½)	2280-2 550 (600-2)

REIL Rws 11 and 29 **U**  
 MIRL Rwy 11-29 **U**