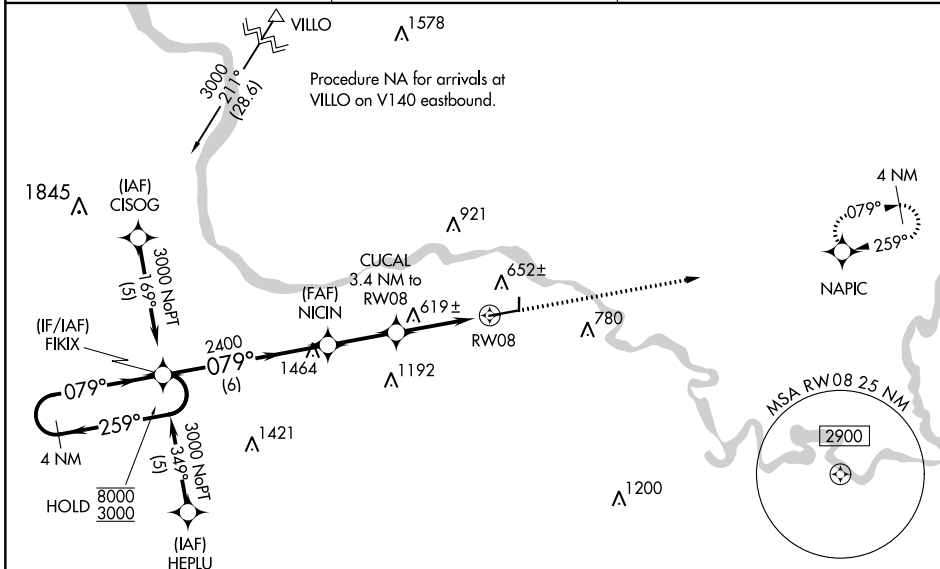


WAAS CH 97717 W08A	APP CRS 079°	Rwy Idg TDZE 463 Apt Elev 465	6002
--	------------------------	---	-------------

RNAV (GPS) RWY 8

BATESVILLE RGNL (BVX)

RNP APCH - GPS.		<p>▽ △</p> <p>Circling NA north of Rwy 8-26. For uncompensated Baro-VNAV systems, LNAV/VNAV NA below -15°C or above 54°C.</p>	<p>MISSED APPROACH: Climb to 3000 direct NAPIC and hold.</p>
AWOS-3PT 126.375	MEMPHIS CENTER 126.85 281.55		



SC-1, 18 APR 2024 to 16 MAY 2024

SC-1, 18 APR 2024 to 16 MAY 2024

ELEV 465		TDZE 463	
4 NM Holding Pattern		VGSI and RNAV glidepath not coincident (VGSI Angle 3.00/TCH 44).	
<p>8000 ← 259°</p> <p>3000 ← 079°</p> <p>GP 3.00° TCH 40</p>		<p>3000 ↑</p> <p>NAPIC</p>	
<p>FIKIX</p> <p>2400</p> <p>1580</p> <p>6 NM</p>		<p>NICIN</p> <p>2400</p> <p>3.4 NM to RWY 08</p> <p>1.4 NM to RWY 08</p> <p>RWY 08</p> <p>079°</p>	
CATEGORY	A	B	C
LPV DA	713-1 250 (300-1)		
LNAV/VNAV DA	802-1¼ 339 (400-1¼)		
LNAV MDA	940-1	477 (500-1)	940-1½ 477 (500-1½)
CIRCLING	980-1 515 (600-1)	1000-1 535 (600-1)	1220-2¼ 755 (800-2¼)
			1400-3 935 (1000-3)
REIL Rwys 8 and 26 0			
MIRL Rwy 8-26 0			