

(KAYLN2.KAYLN) 19227

KAYLN TWO DEPARTURE (RNAV)

LIVINGSTON COUNTY SPENCER J HARDY (OZW)

AL-5485 (FAA)

HOWELL, MICHIGAN

EC-1, 18 APR 2024 to 16 MAY 2024

**TOP ALTITUDE:
ASSIGNED AT ATC**

AWOS-3
118.875
CINC DEL
121.725
CTAF
123.0
DETROIT DEP CON
132.35 284.0

TAKEOFF MINIMUMS:
Standard.

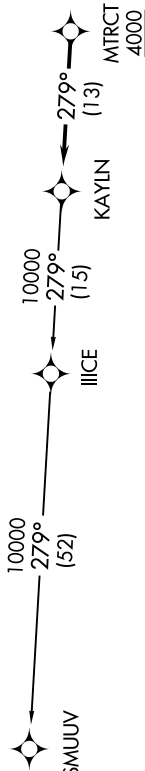
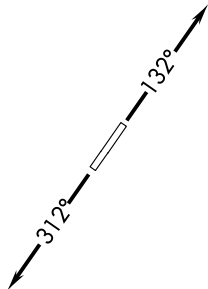
NOTE: RNAV 1.

NOTE: RADAR required.

NOTE: DME/DME/IRU or GPS required.

NOTE: Turbojet departures at/above 10000,
maintain 280K until advised by ATC.

N



NOTE: Chart not to scale.

DEPARTURE ROUTE DESCRIPTION

TAKEOFF RUNWAY 13: Climb on heading 132° or as assigned for RADAR vectors to cross MTRCT at or above 4000, thence....
TAKEOFF RUNWAY 31: Climb on heading 312° or as assigned for RADAR vectors to cross MTRCT at or above 4000, thence....

....on track 279° to KAYLN, then on (transition). Maintain ATC assigned altitude, expect filed altitude 10 minutes after departure.

SMUUV TRANSITION (KAYLN2.SMUUV):

KAYLN TWO DEPARTURE (RNAV)

(KAYLN2.KAYLN) 15AUG19

HOWELL, MICHIGAN

LIVINGSTON COUNTY SPENCER J HARDY (OZW)

EC-1, 18 APR 2024 to 16 MAY 2024