

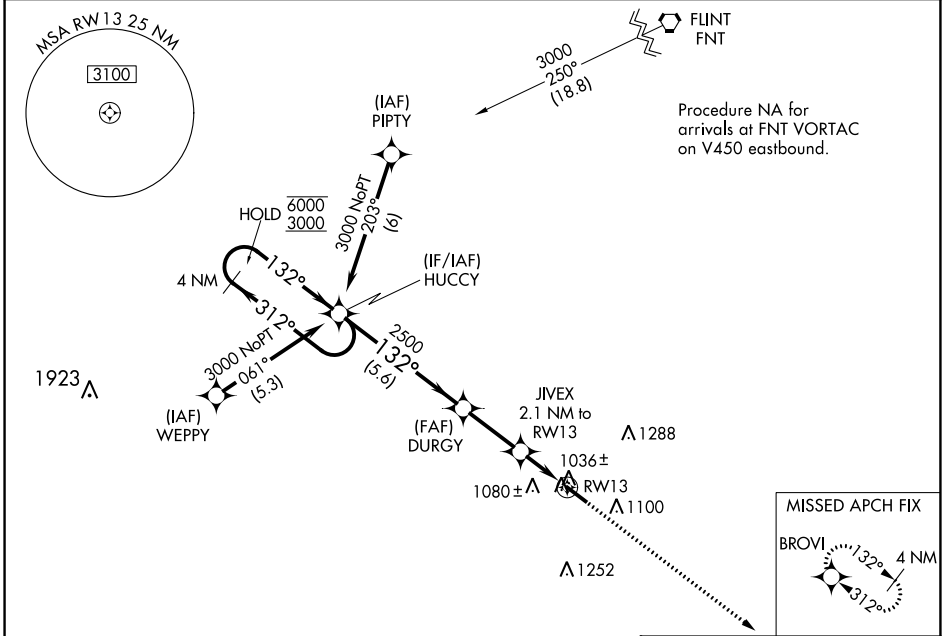
WAAS CH 69601 W13A	APP CRS 132°	Rwy Idg TDZE 962 Apt Elev 962	5002
--	------------------------	---	-------------

RNAV (GPS) RWY 13

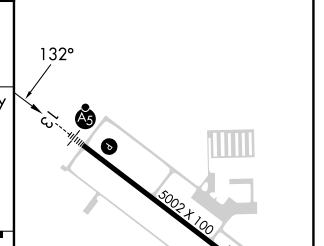
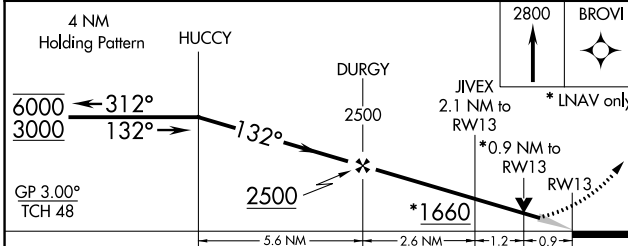
LIVINGSTON COUNTY SPENCER J HARDY (OZW)

RNP APCH.	MALS R	MISSED APPROACH: Climb to 2800 direct BROVI and hold.
<p>▼ For uncompensated Baro-VNAV systems, LNAV/VNAV NA below -16°C or above 37°C. For inop ALS, increase LNAV/VNAV all Cats visibility to ¾ SM.</p>		

AWOS-3 118.875	DETROIT APP CON 132.35 284.0	CLNC DEL 121.725 (GCO)	UNICOM 123.0 (CTAF) 0
--------------------------	--	----------------------------------	---------------------------------



ELEV 962	TDZE 962
----------	----------



CATEGORY	A	B	C	D
LPV DA		1162-½	200 (200-½)	
LNAV/VNAV DA		1212-½	250 (300-½)	
LNAV MDA		1300-½	338 (400-½)	
CIRCLING	1400-1 438 (500-1)	1420-1 458 (500-1)	1600-1¾ 638 (700-1¾)	1600-2 638 (700-2)

HIRL Rwy 13-31 0
REIL Rwy 31 0

EC-1, 18 APR 2024 to 16 MAY 2024

EC-1, 18 APR 2024 to 16 MAY 2024