

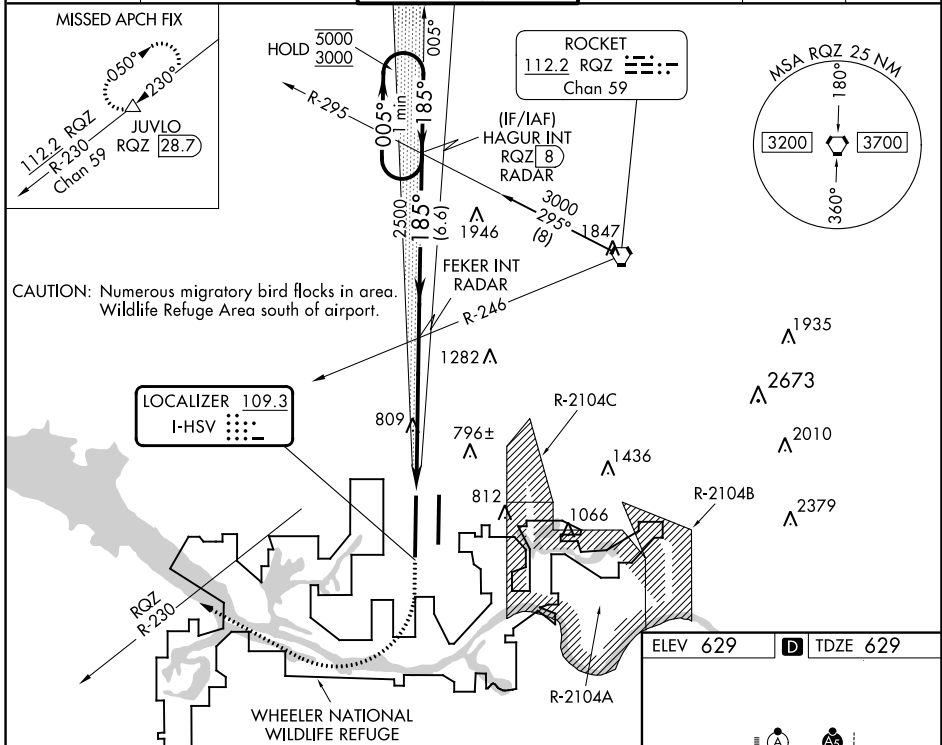
LOC I-HSV 109.3	APP CRS 185°	Rwy ldg 12600 TDZE 629 Apt Elev 629
---------------------------	------------------------	--

ILS RWY 18R (CAT II)

HUNTSVILLE INTL-CARL T JONES FLD (HSV)

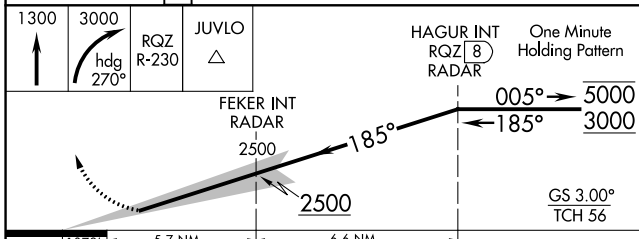
DME required. RADAR required for procedure entry.		ALSIF-2	MISSED APPROACH: Climb to 1300 then climbing right turn to 3000 on heading 270° and RQZ R-230 to JUVLO/RQZ 28.7 DME and hold.

ATIS 121.25	HUNTSVILLE APP CON * 125.6 354.1	HUNTSVILLE TOWER * 127.6 (CTAF) 0 350.35	GND CON 121.9 269.525	CLNC DEL 120.35	UNICOM 122.95
-----------------------	--	--	---------------------------------	---------------------------	-------------------------



SE-4, 18 APR 2024 to 16 MAY 2024

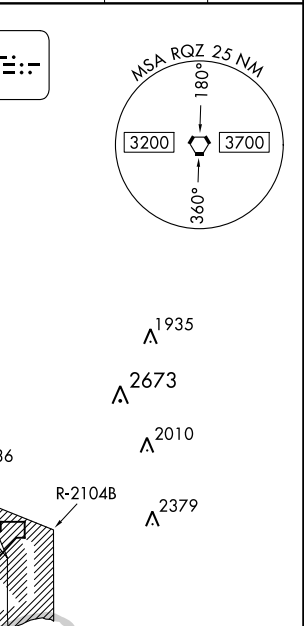
SE-4, 18 APR 2024 to 16 MAY 2024



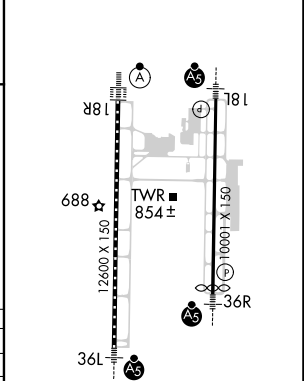
1300	3000	RQZ R-230	JUVLO	HAGUR INT RQZ (B) RADAR	One Minute Holding Pattern
↑	hdg 270°				
FEKER INT RADAR		2500		005° → 5000	
		2500		← 185° 3000	
GS 3.00°				TCH 56	
1079'		5.7 NM		6.6 NM	

CATEGORY	A	B	C	D
S-ILS 18R	RA 105/12 100 DA 729			

CATEGORY II ILS - SPECIAL AIRCREW & AIRCRAFT CERTIFICATION REQUIRED



ELEV 629	TDZE 629
----------	----------



TDZ/CL Rwy 18R and 36L
HIRL Rwy 18L-36R and 18R-36L