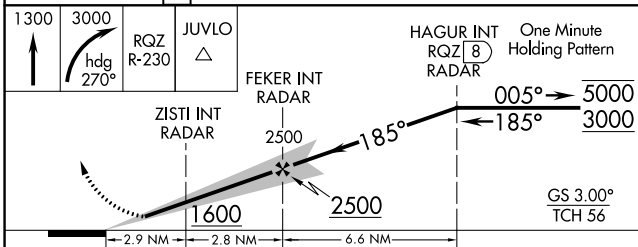
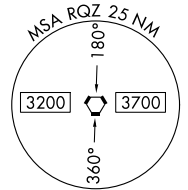
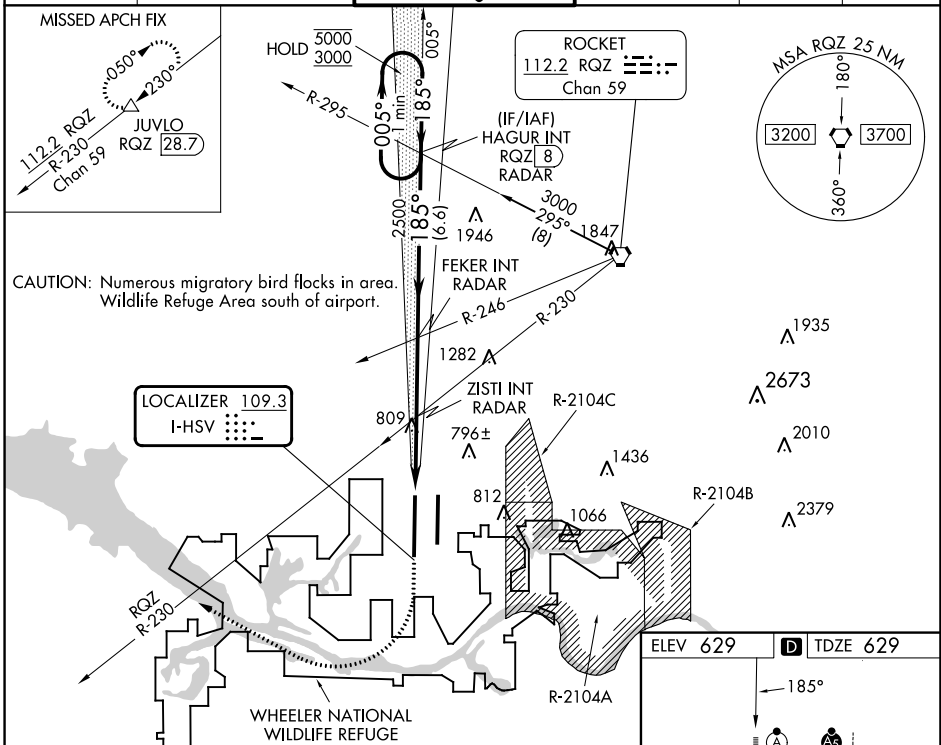


LOC I-HSV 109.3	APP CRS 185°	Rwy Idg 12600 TDZE 629 Apt Elev 629
---------------------------	------------------------	--

ILS or LOC RWY 18R

HUNTSVILLE INTL-CARL T JONES FLD (HSV)

DME required. RADAR required for procedure entry.		ALSF-2 	MISSED APPROACH: Climb to 1300 then climbing right turn to 3000 on heading 270° and RQZ R-230 to JUVLO/RQZ 28.7 DME and hold.				
 Circling NA for Cats C/D/E east of Rwy 18L-36R. Simultaneous approach authorized. For inop ALS, increase S-ILS 18R Cat E visibility to RVR 4000 and S-LOC 18R Cat E visibility to 1/4 SM. DME from RQZ VORTAC. DME use requires simultaneous reception of I-HSV and RQZ DME.		ATIS 121.25	HUNTSVILLE APP CON * 125.6 354.1	HUNTSVILLE TOWER * 127.6 (CTAF) 0 350.35	GND CON 121.9 269.525	CLNC DEL 120.35	UNICOM 122.95



ELEV 629	TDZE 629												
TDZ/CL Rws 18R and 36L HIRL Rws 18L-36R and 18R-36L FAF to MAP 5.7 NM													
CIRCLING	<table border="1"> <tr> <th>Knots</th> <td>60</td> <td>90</td> <td>120</td> <td>150</td> <td>180</td> </tr> <tr> <th>Min:Sec</th> <td>5:42</td> <td>3:48</td> <td>2:51</td> <td>2:17</td> <td>1:54</td> </tr> </table>	Knots	60	90	120	150	180	Min:Sec	5:42	3:48	2:51	2:17	1:54
Knots	60	90	120	150	180								
Min:Sec	5:42	3:48	2:51	2:17	1:54								

SE-4, 18 APR 2024 to 16 MAY 2024

SE-4, 18 APR 2024 to 16 MAY 2024