

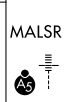
WAAS CH 72906 W18A	APP CRS 185°	Rwy Idg TDZE 609 Apt Elev 629	9801
--	------------------------	---	-------------

RNAV (GPS) RWY 18L

HUNTSVILLE INTL-CARL T JONES FLD (HSV)

RNP APCH - GPS

ASR For uncompensated Baro-VNAV systems, LNAV/VNAV NA below -9°C or above 54°C. Circling NA for Cats C/D/E east of Rwy 18L-36R. For inop ALS, increase LPV Cat E visibility to RVR 4000, LNAV/VNAV Cat E visibility to 1½ SM, and LNAV Cat E visibility to 1¼ SM. Simultaneous approach authorized. LNAV procedure NA during simultaneous operations. Use of FD or AP required during simultaneous operations. * RVR 1800 authorized with use of FD or AP or HUD to DA.

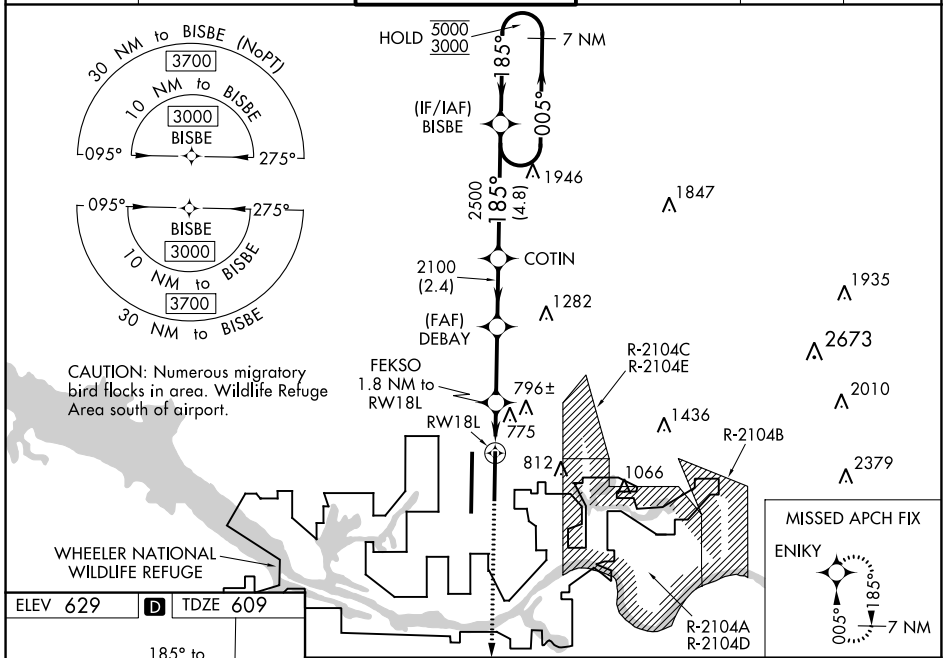


MISSED APPROACH:
Climb to 3000 direct ENIKY and hold.

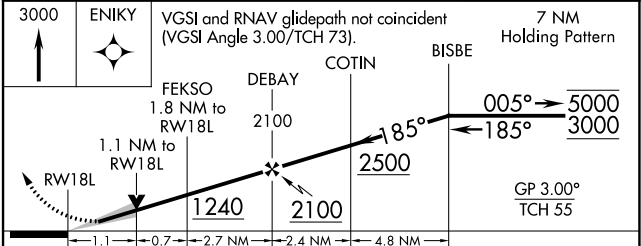
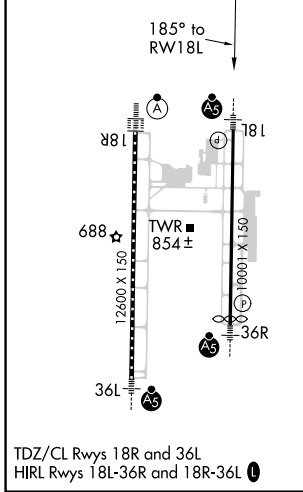
ATIS 121.25	HUNTSVILLE APP CON * 125.6 354.1	HUNTSVILLE TOWER * 127.6 (CTAF) 350.35	GND CON 121.9 269.525	CLNC DEL 120.35	UNICOM 122.95
-----------------------	--	--	---------------------------------	---------------------------	-------------------------

SE-4, 18 APR 2024 to 16 MAY 2024

SE-4, 18 APR 2024 to 16 MAY 2024



ELEV 629	D	TDZE 609
-----------------	----------	-----------------



CATEGORY	A	B	C	D	E
LPV DA*	809/24		200 (200-½)		
LNAV/VNAV DA	1057/45		448 (500-¾)		
LNAV MDA	1040/24 431 (500-½)		1040/40 431 (500-¾)		
C CIRCLING	1160-1 531 (600-1)		1160-1½ 531 (600-1½)	1240-2 611 (700-2)	1260-2¼ 631 (700-2¼)