

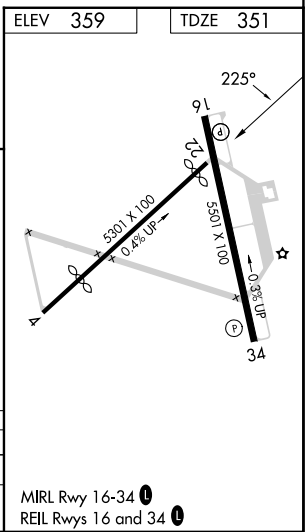
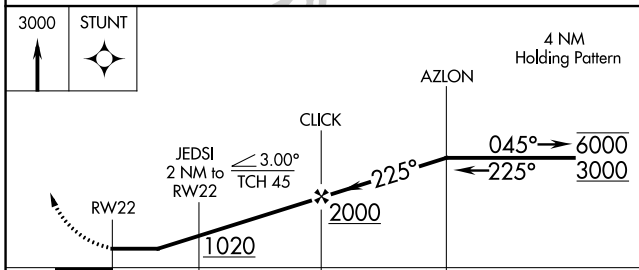
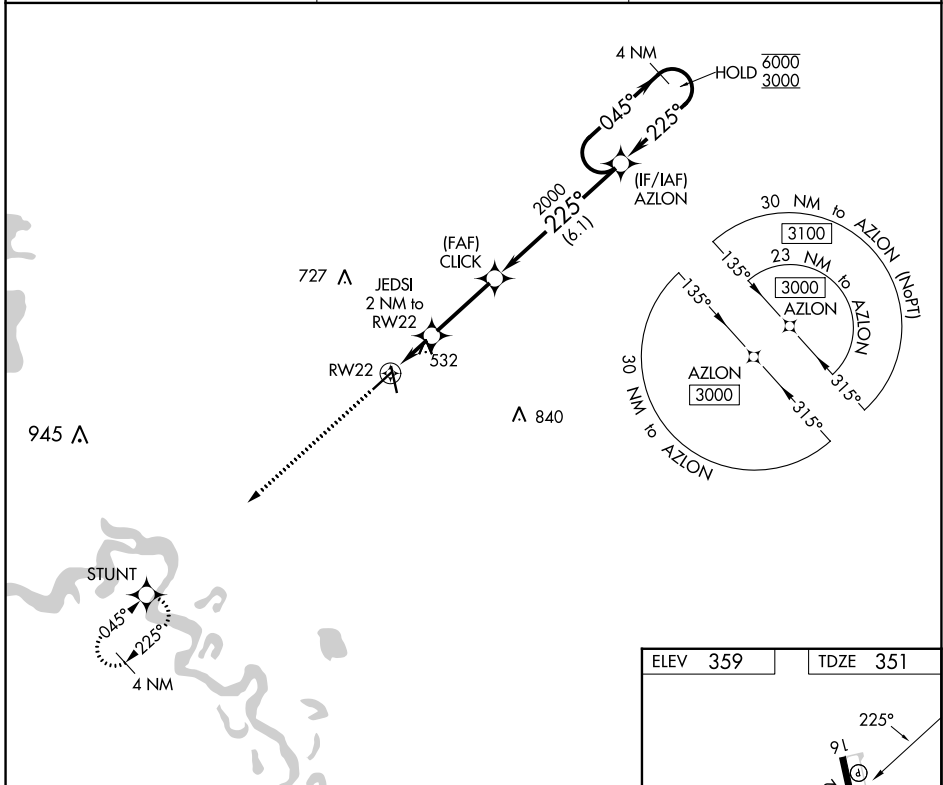
APP CRS	Rwy Idg	4957
225°	TDZE	351
	Apt Elev	359

RNAV (GPS) RWY 22

HOPE MUNI (M18)

RNP APCH - GPS		MISSED APPROACH: Climb to 3000 direct STUNT and hold.
<p>▼ Procedure NA at night.</p> <p>▲ NA Rwy 22 helicopter visibility reduction below 1 SM NA. Use Texarkana altimeter setting.</p>		

TXK ASOS 120.2	FORT WORTH CENTER 123.925 269.475	UNICOM 122.8 (CTAF) ①
--------------------------	---	---------------------------------



CATEGORY	A	B	C	D
LNAV MDA	900-1	549 (600-1)	900-1½	549 (600-1½)
CIRCLING	900-1 541 (600-1)	940-1 581 (600-1)	940-1½ 581 (600-1½)	1100-2½ 741 (800-2½)

MIRL Rwy 16-34 ①
REIL Rwy 16 and 34 ①

SC-1, 18 APR 2024 to 16 MAY 2024

SC-1, 18 APR 2024 to 16 MAY 2024