

HOPE, ARKANSAS

AL-5530 (FAA)

24081

VORTAC TXK <b>116.3</b> Chan <b>110</b>	APP CRS <b>052°</b>	Rwy Idg TDZE Apt Elev	<b>4111</b> <b>346</b> <b>359</b>
---	------------------------	-----------------------------	---

# VOR RWY 4

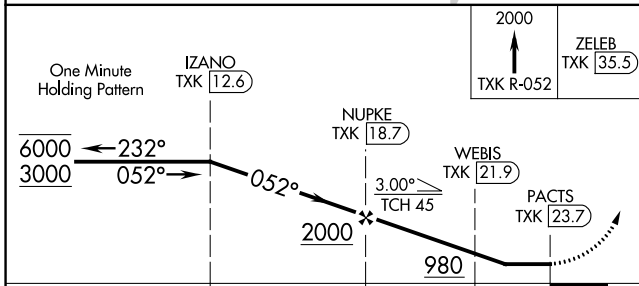
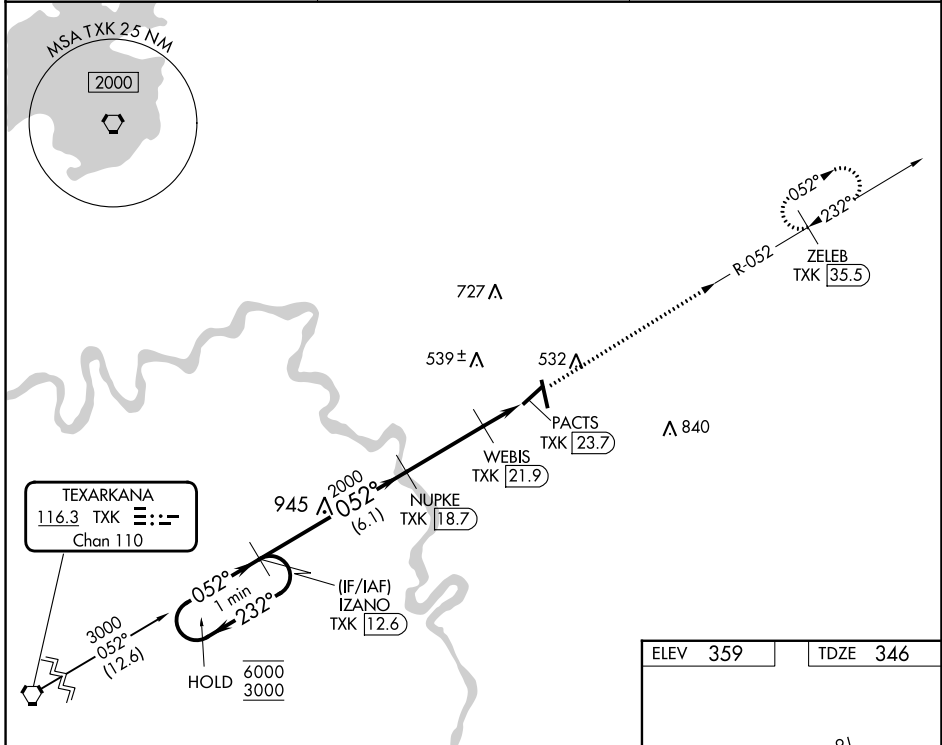
HOPE MUNI (M18)

DME required.

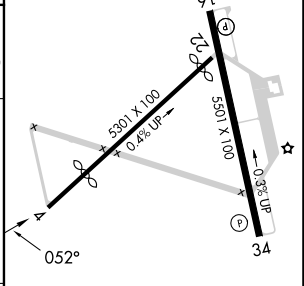
Procedure NA at night. Rwy 4 helicopter visibility reduction below 1 SM NA. Use Texarkana altimeter setting.

MISSED APPROACH: Climb to 2000 on TXK VORTAC R-052 to ZELEB/TXK 35.5 DME and hold.

TXK ASOS <b>120.2</b>	FORT WORTH CENTER <b>123.925 269.475</b>	UNICOM <b>122.8 (CTAF) 0</b>
--------------------------	---	---------------------------------



ELEV 359	TDZE 346
----------	----------



CATEGORY	A	B	C	D
S-4	860-1	514 (600-1)	860-1 $\frac{3}{8}$	514 (600-1 $\frac{3}{8}$ )
CIRCLING	860-1 501 (600-1)	940-1 581 (600-1)	940-1 $\frac{1}{2}$ 581 (600-1 $\frac{1}{2}$ )	1100-2 $\frac{1}{2}$ 741 (800-2 $\frac{1}{2}$ )

MIRL Rwy 16-34  
REIL Rws 16 and 34

HOPE, ARKANSAS  
Orig-A 28JAN21

33°43'N-93°40'W

# HOPE MUNI (M18)

## VOR RWY 4

SC-1, 18 APR 2024 to 16 MAY 2024

SC-1, 18 APR 2024 to 16 MAY 2024