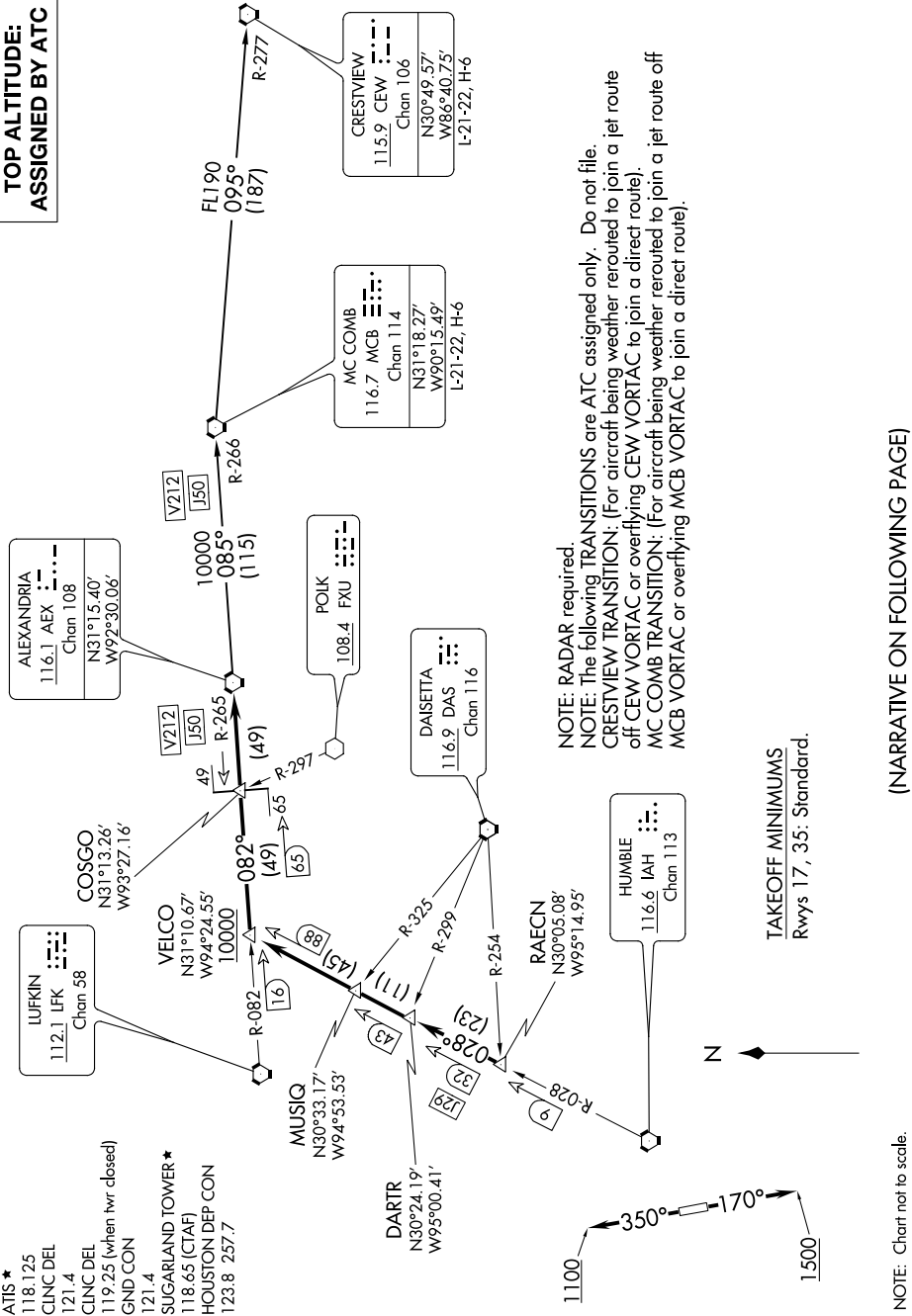


# ALEXANDRIA THREE DEPARTURE

**TOP ALTITUDE:  
ASSIGNED BY ATC**



ATIS \*  
 118.125  
 CLNC DEL  
 121.4  
 CLNC DEL  
 119.25 (when nwr closed)  
 GND CON  
 121.4  
 SUGARLAND TOWER \*  
 118.65 (CTAF)  
 HOUSTON DEP CON  
 123.8 257.7

**NOTE: RADAR required.**  
**NOTE: The following TRANSITIONS are ATC assigned only. Do not file.**  
**CRESTVIEW TRANSITION:** (For aircraft being weather rerouted to join a jet route off CEW VORTAC or overflying CEW VORTAC to join a direct route).  
**MC COMB TRANSITION:** (For aircraft being weather rerouted to join a jet route off MCB VORTAC or overflying MCB VORTAC to join a direct route).

**TAKEOFF MINIMUMS**  
 Rwy 17, 35: Standard.

NOTE: Chart not to scale.

(NARRATIVE ON FOLLOWING PAGE)

SC-5, 18 APR 2024 to 16 MAY 2024

SC-5, 18 APR 2024 to 16 MAY 2024

# ALEXANDRIA THREE DEPARTURE