

(BLTWY7.BLTWY) 21280

AL-5537 (FAA)

BLTWY SEVEN DEPARTURE (RNAV)

SUGAR LAND RGNL (SGR)
HOUSTON, TEXAS

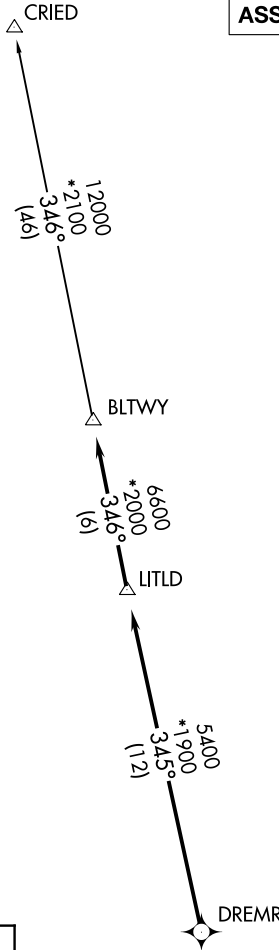
ATIS★
 118.125
 CLNC DEL
 121.4
 CLNC DEL
 119.25 (when twr closed)
 GND CON
 121.4
 SUGARLAND TOWER★
 118.65 (CTAF)
 HOUSTON DEP CON
 123.8 257.7

**TOP ALTITUDE:
ASSIGNED BY ATC**

NOTE: RADAR required.
 NOTE: DME/DME/IRU or GPS required.
 NOTE: RNAV 1.

TAKEOFF MINIMUMS

Rwys 17, 35: Standard with minimum climb
 of 500' per NM to 600.



SC-5, 18 APR 2024 to 16 MAY 2024

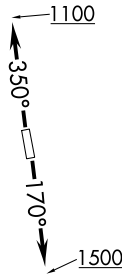
SC-5, 18 APR 2024 to 16 MAY 2024

DEPARTURE ROUTE DESCRIPTION

TAKEOFF RUNWAY 17: Climb on heading 170° to 1500 for RADAR vectors to DREMR, thence . . .

TAKEOFF RUNWAY 35: Climb on heading 350° to 1100 for RADAR vectors to DREMR, thence . . .

...on track 345° to LITLD, then on track 346° to BLTWY, then on (transition). Maintain ATC assigned altitude. Expect filed altitude 10 minutes after departure.



CRIED TRANSITION (BLTWY7.CRIED)

NOTE: Chart not to scale.

BLTWY SEVEN DEPARTURE (RNAV)
 (BLTWY7.BLTWY) 07OCT21

HOUSTON, TEXAS
SUGAR LAND RGNL (SGR)