

(INDIE8.INDIE) 21280

AL-5537 (FAA)

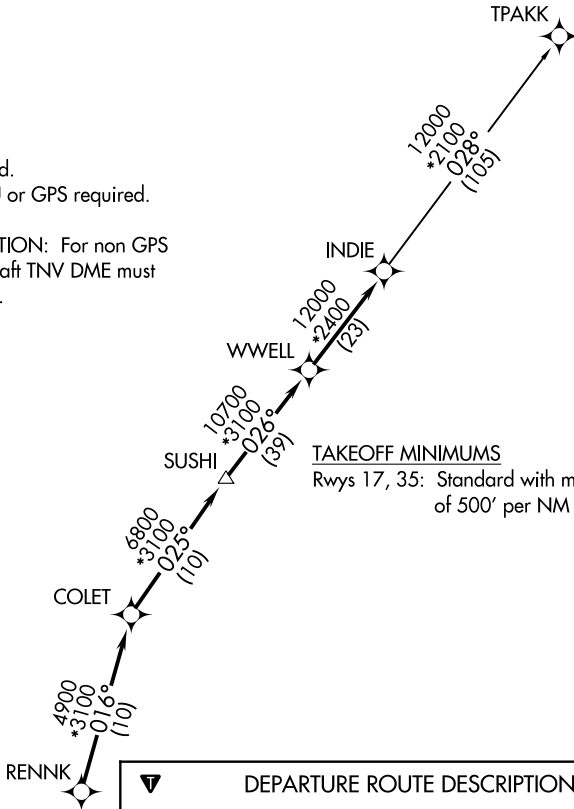
SUGAR LAND RGNL (SGR)
HOUSTON, TEXAS

INDIE EIGHT DEPARTURE (RNAV)

ATIS ★
118.125
CLNC DEL
121.4
CLNC DEL
119.25 (when twr closed)
GND CON
121.4
SUGARLAND TOWER ★
118.65 (CTAF)
HOUSTON DEP CON
123.8 257.7

**TOP ALTITUDE:
ASSIGNED BY ATC**

- NOTE: RADAR required.
- NOTE: DME/DME/IRU or GPS required.
- NOTE: RNAV 1.
- NOTE: TPAKK TRANSITION: For non GPS equipped aircraft TNV DME must be operational.



TAKEOFF MINIMUMS
Rwys 17, 35: Standard with minimum climb of 500' per NM to 600.

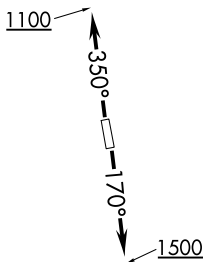
DEPARTURE ROUTE DESCRIPTION

TAKEOFF RUNWAY 17: Climb on heading 170° to 1500 for RADAR vectors to RENNK, then

TAKEOFF RUNWAY 35: Climb on heading 350° to 1100 for RADAR vectors to RENNK, then

. . . . on track 016° to COLET, then on track 025° to SUSHI, then on track 026° to WWELL, then on track 026° to INDIE, then on (transition). Maintain ATC assigned altitude. Expect filed altitude 10 minutes after departure.

TPAKK TRANSITION (INDIE8.TPAKK)



NOTE: Chart not to scale.

SC-5, 18 APR 2024 to 16 MAY 2024

SC-5, 18 APR 2024 to 16 MAY 2024

INDIE EIGHT DEPARTURE (RNAV)
(INDIE8.INDIE) 07OCT21

HOUSTON, TEXAS
SUGAR LAND RGNL (SGR)