

KARRR SEVEN DEPARTURE (RNAV)

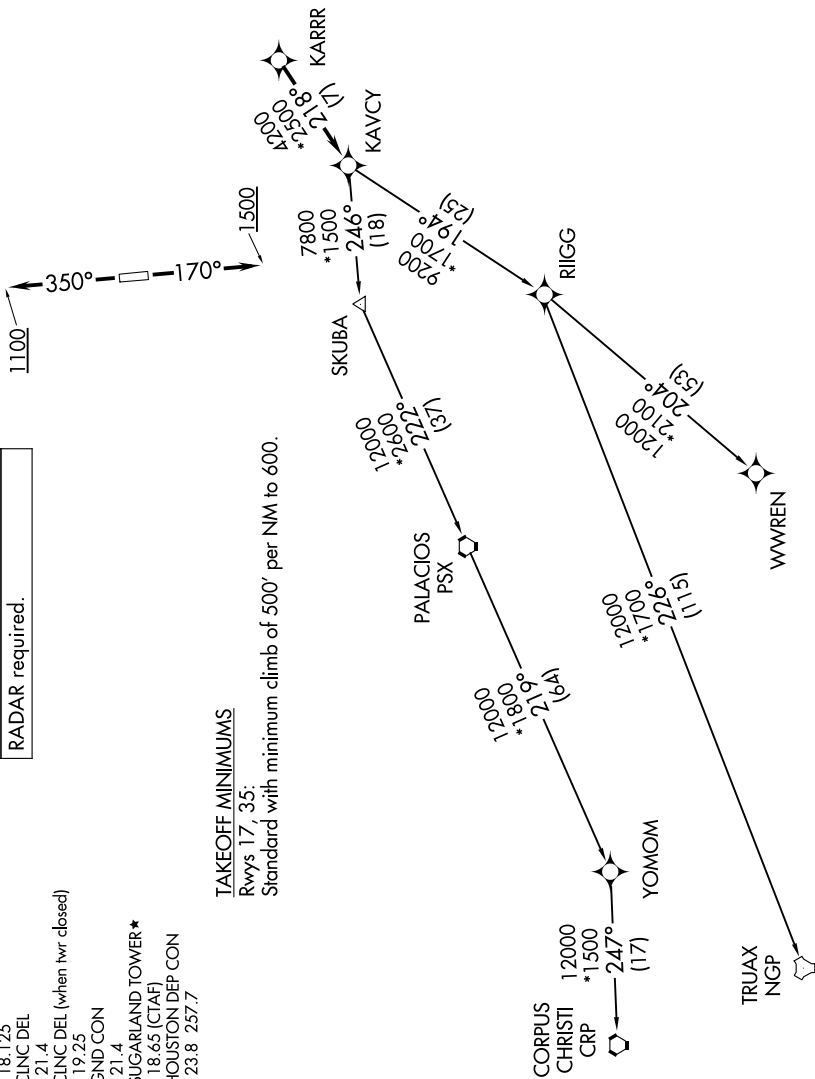
**TOP ALTITUDE:
ASSIGNED BY ATC**

RNAV-1 DME/DME/IRU or GPS.
RADAR required.

ATIS *
118.125
CINC DEL
121.4
CINC DEL (when hwr closed)
119.25
GND CON
121.4
SUGARLAND TOWER *
118.65 (CTAF)
HOUSTON DEP CON
123.8 257.7

TAKEOFF MINIMUMS

Rwys 17, 35:
Standard with minimum climb of 500' per NM to 600.



(NARRATIVE ON FOLLOWING PAGE)

NOTE: Chart not to scale.

KARRR SEVEN DEPARTURE (RNAV)