

LURIC EIGHT DEPARTURE (RNAV)

ATIS ★
 118.125
 CLNC DEL
 121.4
 CLNC DEL
 119.25 (when twr closed)
 GND CON
 121.4
 SUGAR LAND TOWER ★
 118.65 (CTAF)
 HOUSTON DEP CON
 123.8 257.7

TOP ALTITUDE: ASSIGNED BY ATC

NOTE: RADAR required.
 NOTE: DME/DME/IRU or GPS required.
 NOTE: RNAV 1.

TAKEOFF MINIMUMS

Rwys 17, 35: Standard with minimum
 climb of 500' per NM to 600.

DEPARTURE ROUTE DESCRIPTION

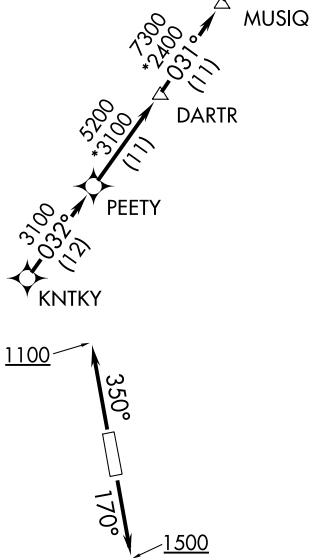
TAKEOFF RWY 17: Climb on heading 170° to 1500
 for RADAR vectors to KNTKY, thence . . .

TAKEOFF RWY 35: Climb on heading 350° to 1100
 for RADAR vectors to KNTKY, thence . . .

. . . on track 032° to PEETY, then on track 032° to
 DARTR, then on track 031° to MUSIQ, then on track
 031° to CLAVN, then on track 031° to VELCO, then
 on track 031° to ENJOY, then on track 031° to LURIC,
 then on (transition). Maintain ATC assigned altitude.
 Expect filed altitude 10 minutes after departure.

HAWES TRANSITION (LURIC8.HAWES)

ORRTH TRANSITION (LURIC8.ORRTH)



NOTE: Chart not to scale.

SC-5, 18 APR 2024 to 16 MAY 2024

SC-5, 18 APR 2024 to 16 MAY 2024