

APP CRS	Rwy Idg	3900
036°	TDZE	833
	Apt Elev	833

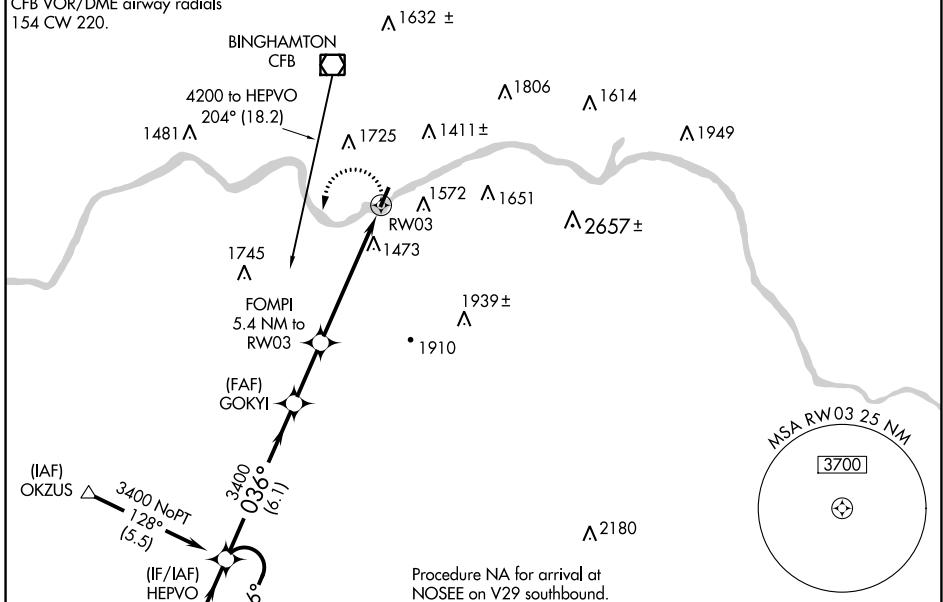
RNAV (GPS) RWY 3

TRI-CITIES (CZG)

<p>NA</p> <p>-17°C</p>	<p>DME/DME RNP-0.3 NA. Procedure NA at night.</p> <p>Rwy 3 helicopter visibility reduction below 1 SM NA.</p>	<p>MISSED APPROACH: Climbing left turn to 3400 direct HEPVO and hold.</p>
--------------------------------------	---	---

<p>AWOS-3</p> <p>119.075</p>	<p>BINGHAMTON APP CON *</p> <p>118.6 257.625</p>	<p>CLNC DEL</p> <p>121.7</p>	<p>UNICOM</p> <p>122.8 (CTAF) 0</p>
-------------------------------------	---	-------------------------------------	--

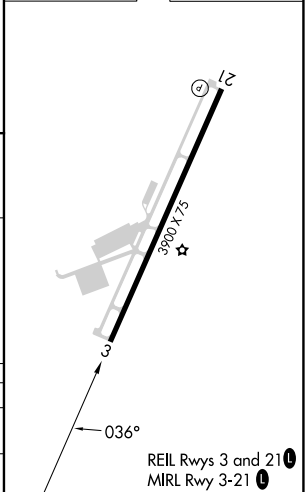
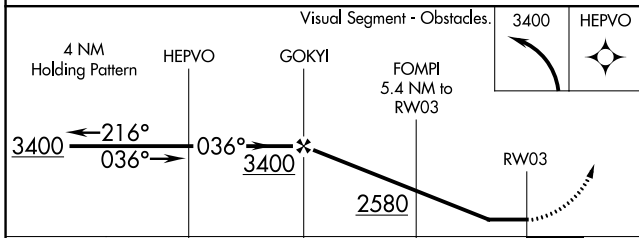
Procedure NA for arrival on CFB VOR/DME airway radials 154 CW 220.



NE-2, 18 APR 2024 to 16 MAY 2024

NE-2, 18 APR 2024 to 16 MAY 2024

ELEV 833	TDZE 833
----------	----------



CATEGORY	A	B	C	D
LNAV MDA	2160-1¼ 1327 (1400-1¼)	2160-1½ 1327 (1400-1½)		NA
CIRCLING	2160-1¼ 1327 (1400-1¼)	2160-1½ 1327 (1400-1½)		NA

REIL Rwy 3 and 21 0
MIRL Rwy 3-21 0