

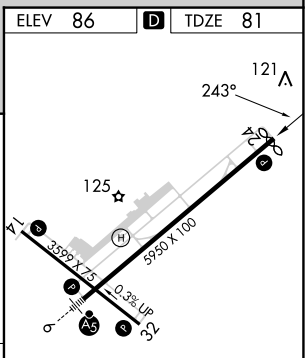
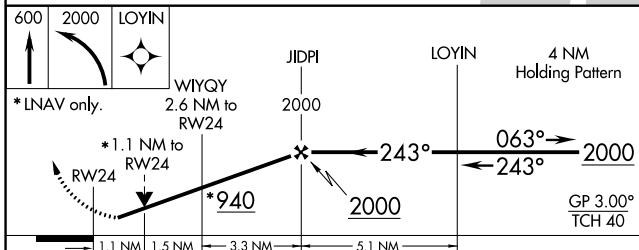
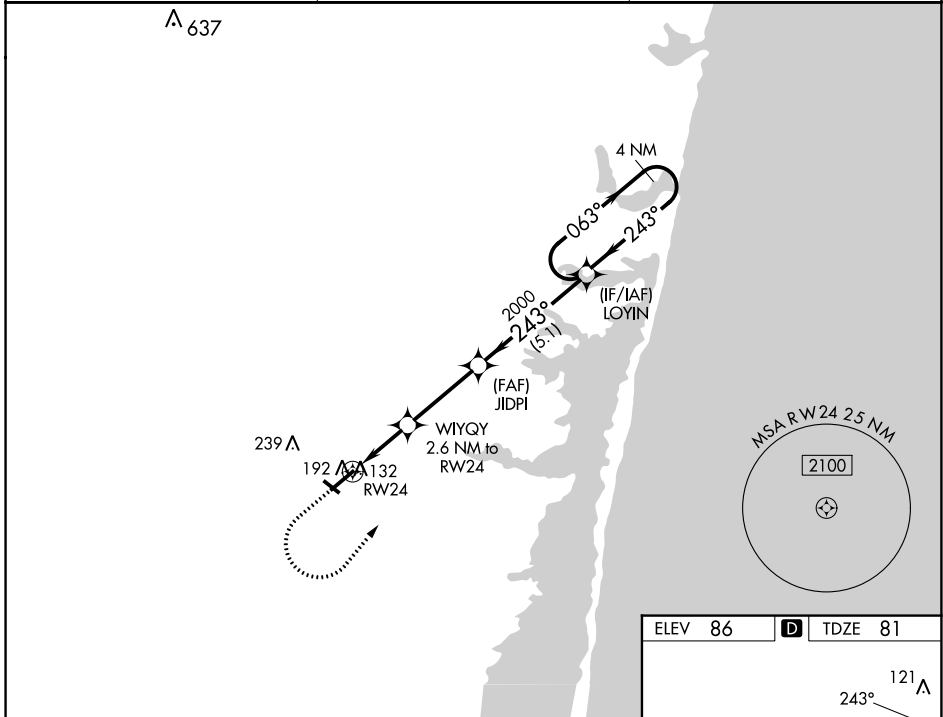
WAAS CH 86433 W24A	APP CRS 243°	Rwy Idg TDZE Apt Elev	5835 81 86
--	------------------------	-----------------------------	---------------------------------------

RNAV (GPS) RWY 24

OCEAN COUNTY (MJX)

RNP APCH.	MISSED APPROACH: Climb to 600 then climbing left turn to 2000 direct to LOYIN and hold.
-----------	---

AWOS-3PT 119.875	MC GUIRE APP CON 126.475 363.8	UNICOM 122.7 (CTAF)
----------------------------	--	-------------------------------



		A	B	C	D
CATEGORY					
LPV DA			331-3/4	250 (300-3/4)	
LNAV/VNAV DA			358-7/8	277 (300-7/8)	
LNAV MDA			460-1	379 (400-1)	
CIRCLING	540-1	560-1	580-1 1/2	700-2	
	454 (500-1)	474 (500-1)	494 (500-1 1/2)	614 (700-2)	

ELEV 86 **D** TDZE 81

MIRL Rwy 14-32 **L**
 HIRL Rwy 6-24 **L**
 REIL Rwy 14, 24 and 32 **L**

NE-2, 18 APR 2024 to 16 MAY 2024

NE-2, 18 APR 2024 to 16 MAY 2024