

WAAS CH <b>93733</b> <b>W06A</b>	APP CRS <b>063°</b>	Rwy Idg <b>5835</b> TDZE <b>81</b> Apt Elev <b>81</b>
--	------------------------	---

# RNAV (GPS) RWY 6

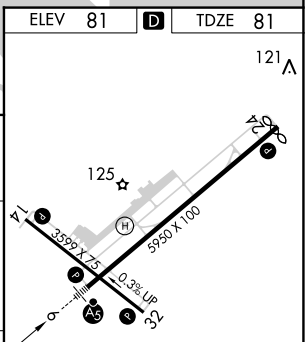
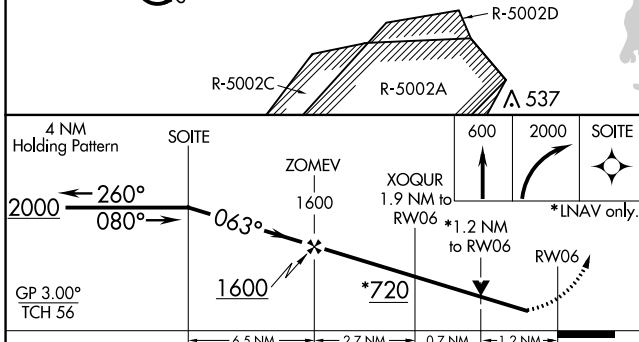
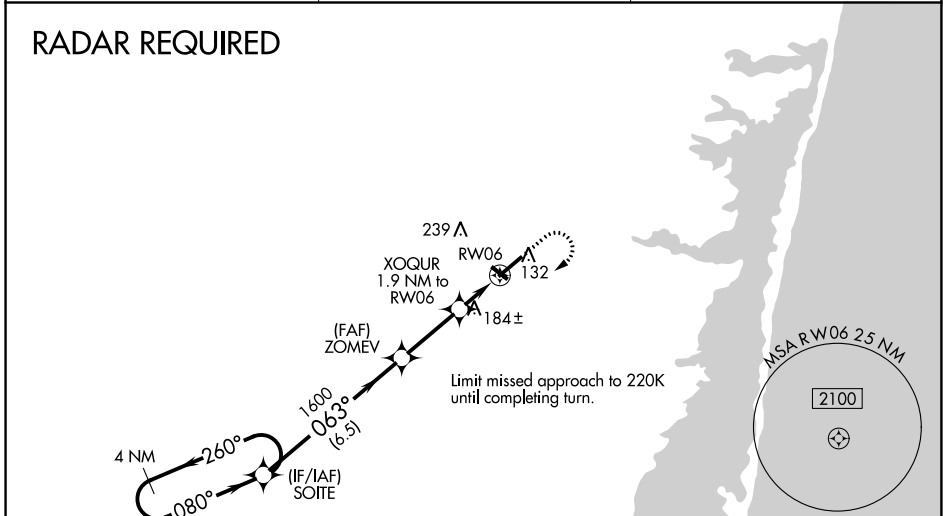
OCEAN COUNTY (MJX)

**▽** Circling Rwy 14, 32 NA at night. For uncompensated Baro-VNAV systems, LNAV/VNAV NA below -15°C (5°F) or above 54°C (130°F). DME/DME RNP -0.3 NA. Inop table does not apply to LPV. For inop MALSR, increase LNAV/VNAV all Cats and LNAV Cats A/B visibility to 1. When local altimeter setting not received, use Mc Guire Fld (Joint Base Mc Guire Dix Lakehurst) altimeter setting and increase all DA 41 feet and all MDA 60 feet; increase LNAV Cats C/D visibility 1/8 mile and Circling Cat D visibility 1/4 mile. For inop MALSR when using Mc Guire Fld (Joint Base Mc Guire Dix Lakehurst) altimeter setting, increase LPV all Cats visibility to 1/8, LNAV/VNAV all Cats visibility to 1/8, LNAV Cats A/B visibility to 1, and LNAV Cats C/D visibility to 1/8. Helicopter visibility reduction below 3/4 SM NA. VDP and Baro-VNAV NA when using Mc Guire Fld (Joint Base Mc Guire Dix Lakehurst) altimeter setting.

**MALSR**

**MISSED APPROACH:**  
Climb to 600 then climbing right turn to 2000 direct SOITE and hold.

AWOS-3PT <b>119.875</b>	MC GUIRE APP CON <b>126.475 363.8</b>	UNICOM <b>122.7 (CTAF) ①</b>
----------------------------	--	---------------------------------



CATEGORY	A	B	C	D
LPV DA	331-3/4		250 (300-3/4)	
LNAV/VNAV DA	405-3/4		324 (400-3/4)	
LNAV MDA	520-3/4 439 (500-3/4)		520-7/8 439 (500-7/8)	
<b>C</b> CIRCLING	520-1 439 (500-1)	560-1 479 (500-1)	580-1 1/2 499 (500-1 1/2)	700-2 619 (700-2)

ELEV 81 **D** TDZE 81

121 **A**

MIRL Rwy 14-32 **①**  
HIRL Rwy 6-24 **①**  
REIL Rws 14, 24 and 32 **①**

NE-2, 18 APR 2024 to 16 MAY 2024

NE-2, 18 APR 2024 to 16 MAY 2024