

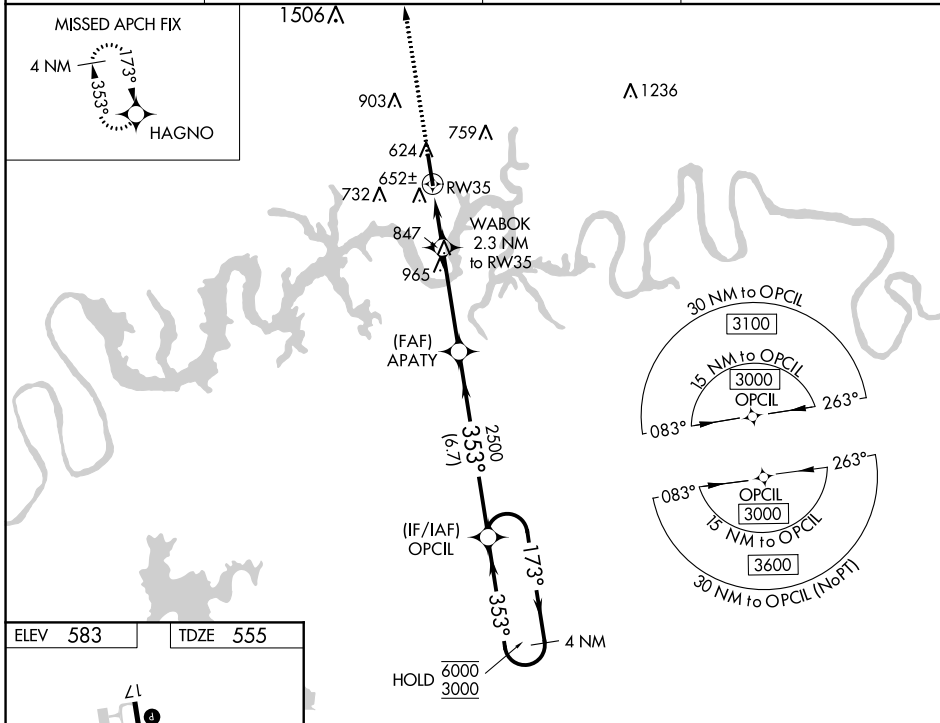
WAAS CH 65627 W35A	APP CRS 353°	Rwy Idg TDZE Apt Elev	6300 555 583
--	------------------------	-----------------------------	---

RNAV (GPS) RWY 35

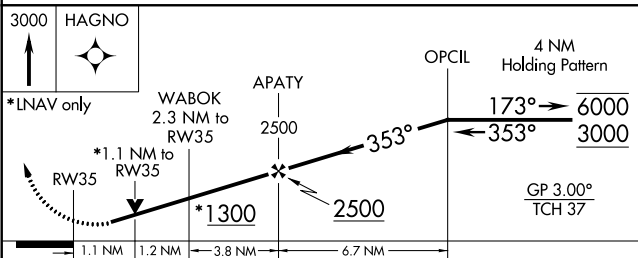
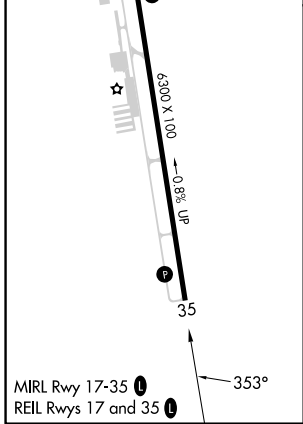
MUSIC CITY EXEC (XNX)

RNP APCH.			MISSED APPROACH: Climb to 3000 direct HAGNO and hold.
<p>For uncompensated Baro-VNAV systems, LNAV/VNAV NA below -16°C or above 54°C. Rwy 35 helicopter visibility reduction below ¾ SM NA.</p>			

AWOS-3 132.725	NASHVILLE APP CON 118.4 360.7	GCO 135.075	UNICOM 123.05 (CTAF) 0
--------------------------	---	-----------------------	----------------------------------



ELEV 583	TDZE 555
----------	----------



CATEGORY	A	B	C	D
LPV DA		805-¾	250 (300-¾)	
LNAV/VNAV DA		829-⅞	274 (300-⅞)	
LNAV MDA		920-1	365 (400-1)	
C CIRCLING	1100-1 517 (600-1)	1120-1 537 (600-1)	1240-1¼ 657 (700-1¼)	1280-2¼ 697 (700-2¼)

SE-1, 18 APR 2024 to 16 MAY 2024

SE-1, 18 APR 2024 to 16 MAY 2024