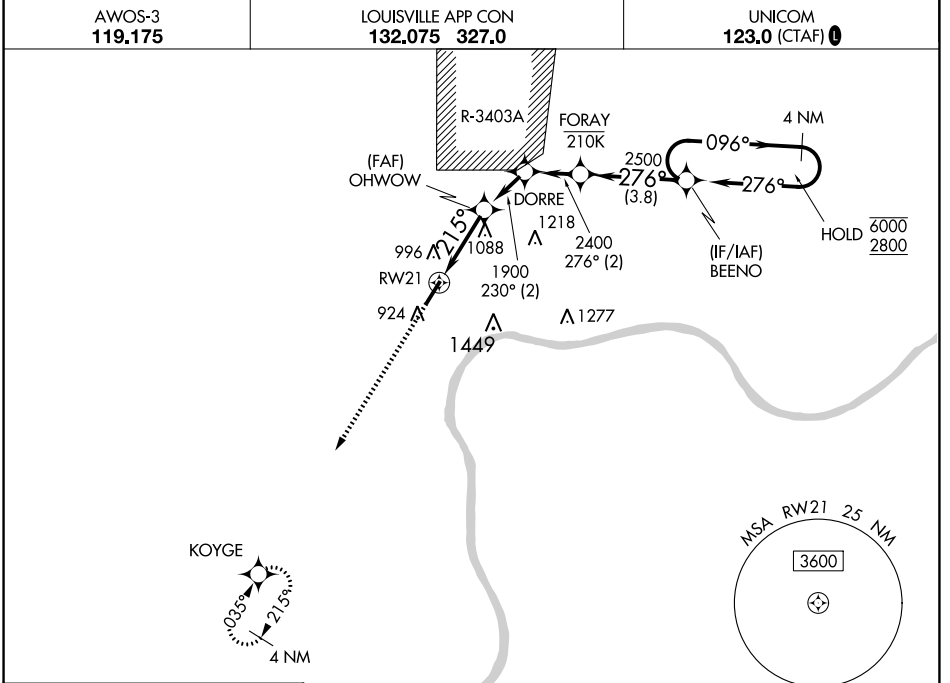


WAAS CH <b>65943</b> <b>W21A</b>	APP CRS <b>215°</b>	Rwy ldg TDZE Apt Elev	<b>5000</b> <b>819</b> <b>819</b>
--	------------------------	-----------------------------	---

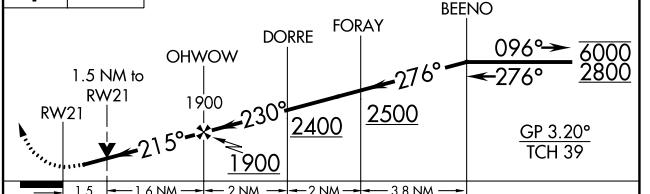
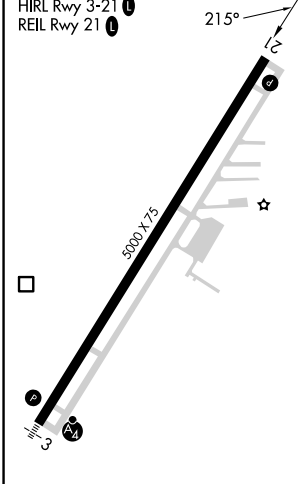
# RNAV (GPS) RWY 21

MADISON MUNI (IMS)

RNP APCH.	<p><b>⚠</b> Circling NA for Cat C east of Rwy 03-21. Rwy 21 helicopter visibility reduction below <math>\frac{3}{4}</math> SM NA. For uncompensated Baro-VNAV systems, LNAV/VNAV NA below -16°C or above 54°C.</p>	<p>MISSED APPROACH: Climb to 4000 direct KOYGE and hold, continue climb-in-hold to 4000.</p>
AWOS-3 <b>119.175</b>		



ELEV <b>819</b>	TDZE <b>819</b>
-----------------	-----------------



	A	B	C	D
CATEGORY	A	B	C	D
LPV DA	1099- $\frac{7}{8}$	280 (300- $\frac{7}{8}$ )		NA
LNAV/VNAV DA	1132- $\frac{7}{8}$	313 (400- $\frac{7}{8}$ )		NA
LNAV MDA	1340-1	521 (600-1)	1340-1 $\frac{1}{2}$ 521 (600-1 $\frac{1}{2}$ )	NA
CIRCLING	1340-1	521 (600-1)	1340-1 $\frac{1}{2}$ 521 (600-1 $\frac{1}{2}$ )	NA

EC-2, 18 APR 2024 to 16 MAY 2024

EC-2, 18 APR 2024 to 16 MAY 2024