

LOC/DME I-HWY	APP CRS	Rwy Idg	5000
109.75	149°	TDZE	327
Chan 34 (Y)		Apt Elev	336

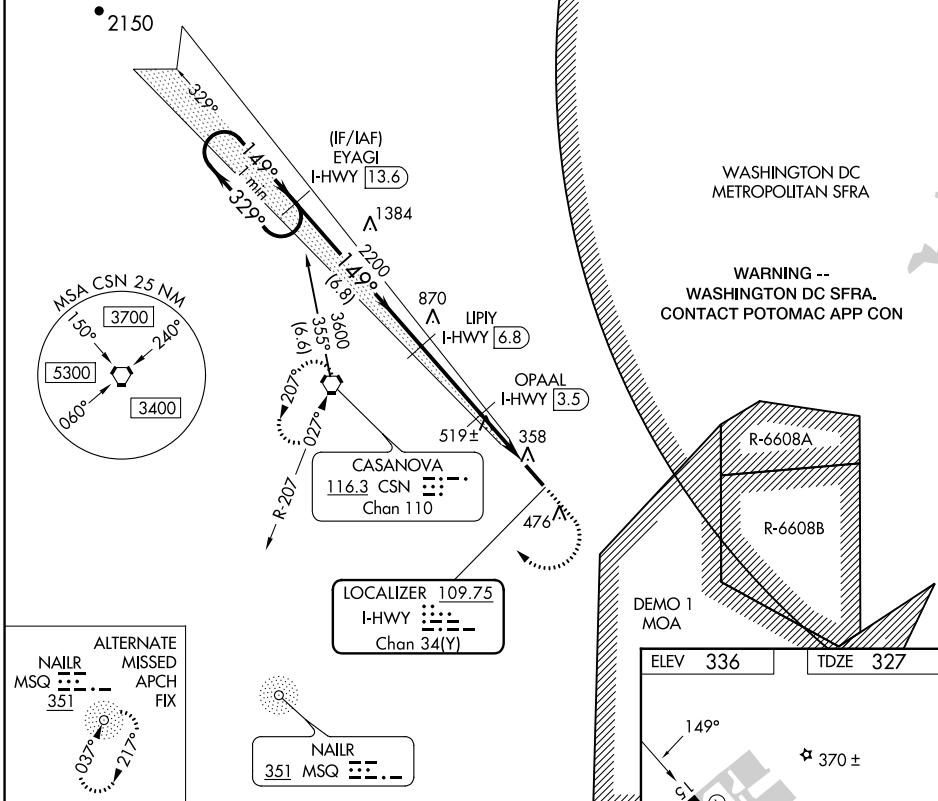
LOC/DME RWY 15

WARRENTON/FAUQUIER (HWY)

⚠ Helicopter visibility reduction below 3/4 SM NA. VDP NA with Culpeper altimeter setting. When local altimeter setting not received, use Culpeper altimeter setting and increase all MDAs 40 feet and Circling Cat D visibility 1/4 SM.

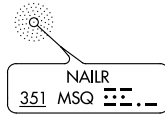
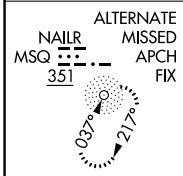
MISSED APPROACH: Climb to 1200 then climbing right turn to 3000 direct CSN VORTAC and hold.

AWOS-3	CJR AWOS-3	POTOMAC APP CON	UNICOM
120.35	119.325	128.525 306.925	122.7 (CTAF) 0

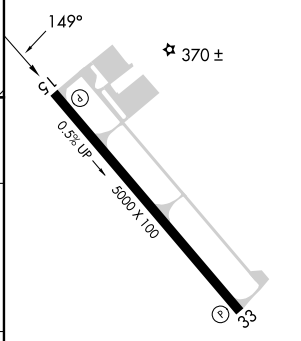
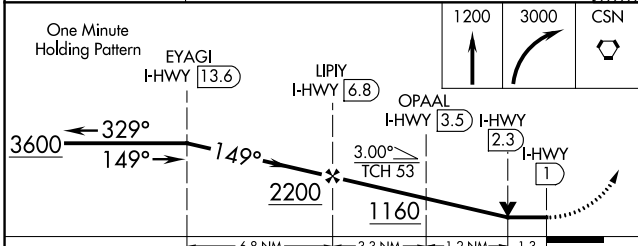


NE-3, 18 APR 2024 to 16 MAY 2024

NE-3, 18 APR 2024 to 16 MAY 2024



ELEV	336	TDZE	327
------	-----	------	-----



CATEGORY	A	B	C	D
S-15	780-1	453 (500-1)	780-1 3/8	453 (500-1 1/8)
CIRCLING	780-1 444 (500-1)	800-1 464 (500-1)	880-1 1/2 544 (600-1 1/2)	980-2 644 (700-2)

REIL Rws 15 and 33
HIRL Rwy 15-33 **0**