

WAAS CH <b>70426</b> <b>W33A</b>	APP CRS <b>329°</b>	Rwy Idg TDZE Apt Elev	<b>5000</b> <b>336</b> <b>336</b>
--	------------------------	-----------------------------	---

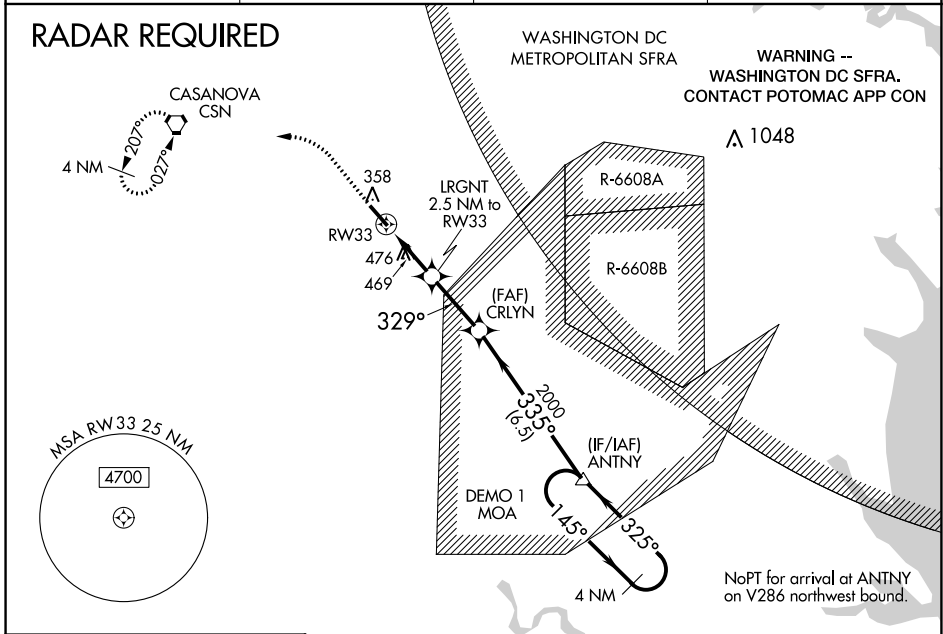
# RNAV (GPS) RWY 33

WARRENTON/FAUQUIER (HWY)

**▼** DME/DME RNP-0.3 NA. When local altimeter setting not received, use Culpeper altimeter setting; increase all MDA 40 feet, increase LP Cat C/D visibility 1/8 SM, increase LNAV Cat C/D and Circling Cat D visibility 1/4 SM.

**▲** MISSED APPROACH: Climb to 800 then climbing left turn to 3000 direct CSN VORTAC and hold, continue climb in hold to 3000.

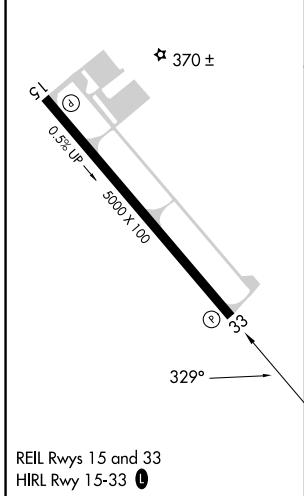
AWOS-3 <b>120.35</b>	CJR AWOS-3 <b>119.325</b>	POTOMAC APP CON <b>128.525 306.925</b>	UNICOM <b>122.7 (CTAF)</b>
-------------------------	------------------------------	---	-------------------------------



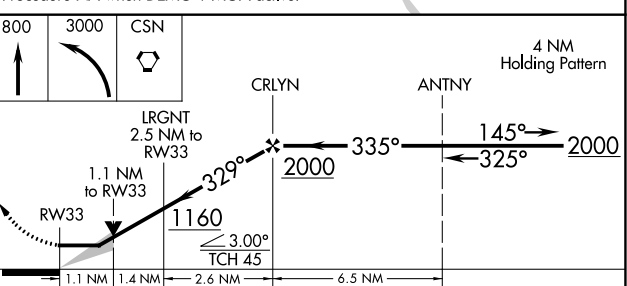
NE-3, 18 APR 2024 to 16 MAY 2024

NE-3, 18 APR 2024 to 16 MAY 2024

ELEV 336	TDZE 336
----------	----------



Procedure NA when DEMO 1 MOA active.



CATEGORY	A	B	C	D
LP MDA	720-1	384 (400-1)	720-1½	384 (400-1½)
LNAV MDA	740-1	404 (500-1)	740-1½	404 (500-1½)
CIRCLING	760-1 424 (500-1)	800-1 464 (500-1)	880-1½ 544 (600-1½)	980-2 644 (700-2)