

VORTAC CSN <b>116.3</b> Chan <b>110</b>	APP CRS <b>119°</b>	Rwy Idg TDZE <b>327</b> Apt Elev <b>336</b>
---	------------------------	---

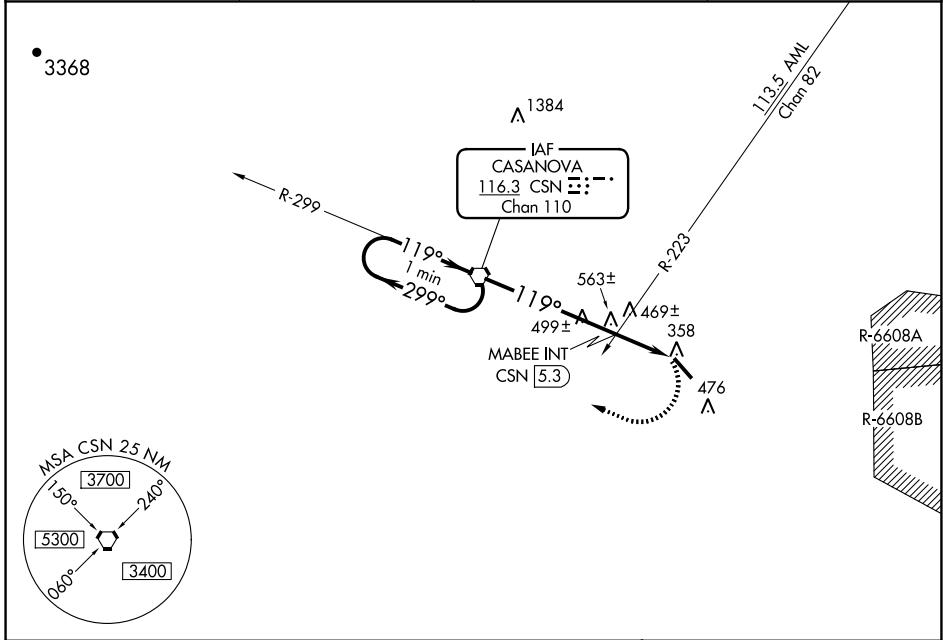
# VOR RWY 15

WARRENTON/FAUQUIER (HWY)

**⚠** When local altimeter setting not received, use Culpeper altimeter setting and increase all MDA 40 feet; increase S-15 Cats C/D and Circling Cats C/D visibility ½ SM; increase MABEE fix minimums S-15 Cats C/D and Circling Cat D visibility ¼ SM. Helicopter visibility reduction below ¾ SM NA.

**MISSED APPROACH:** Climbing right turn to 2800 direct to CSN VORTAC and hold.

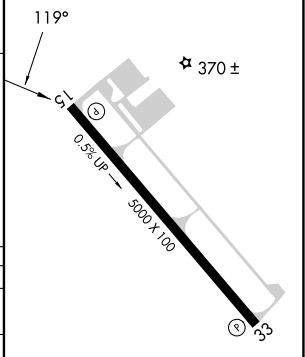
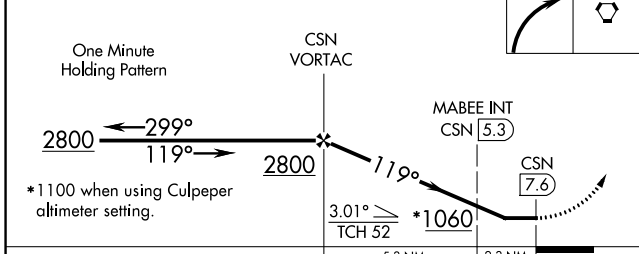
AWOS-3 <b>120.350</b>	CJR AWOS-3 <b>119.325</b>	POTOMAC APP CON <b>128.525 306.925</b>	UNICOM <b>122.7 (CTAF) 0</b>
--------------------------	------------------------------	---	---------------------------------



NE-3, 18 APR 2024 to 16 MAY 2024

NE-3, 18 APR 2024 to 16 MAY 2024

2800	CSN	ELEV 336	TDZE 327
------	-----	----------	----------



CATEGORY	A	B	C	D
S-15	1060-1 733 (800-1)	1060-1¼ 733 (800-1¼)	1060-2 733 (800-2)	1060-2¼ 733 (800-2¼)
CIRCLING	1060-1	724 (800-1)	1060-2 724 (800-2)	1060-2¼ 724 (800-2¼)
<b>MABEE FIX MINIMUMS (DUAL VOR RECEIVERS OR DME REQUIRED)</b>				
S-15	820-1	493 (500-1)	820-1⅜	493 (500-1⅜)
CIRCLING	820-1	484 (500-1)	880-1½ 544 (600-1½)	980-2 644 (700-2)

REIL Rws 15 and 33  
HIRL Rwy 15-33 0

FAF to MAP 7.6 NM

Knots	60	90	120	150	180
Min:Sec	7:36	5:04	3:48	3:02	2:32