

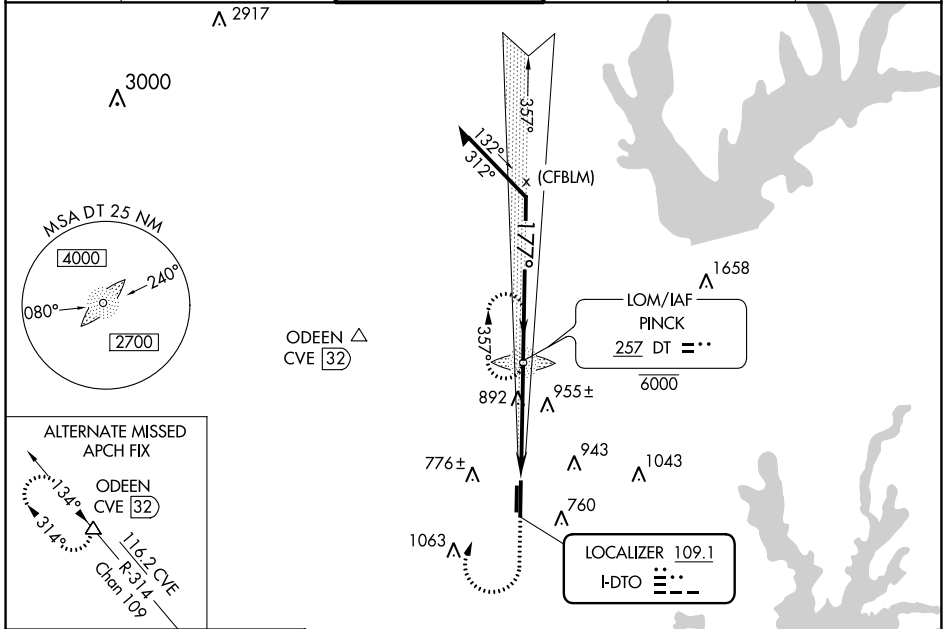
LOC I-DTO 109.1	APP CRS 177°	Rwy Idg 18L 6502 18R 5003 TDZE 642 643 Apt Elev 643 643
---------------------------	------------------------	--

ILS or LOC RWY 18L

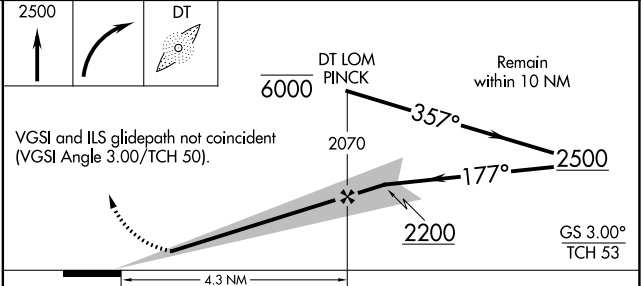
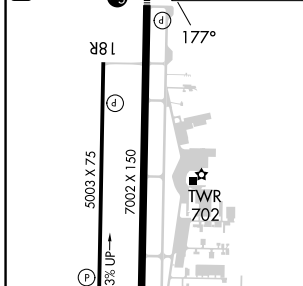
DENTON ENTERPRISE (D'TO)

ADF required. RADAR required for procedure entry.		MALSR AG	MISSED APPROACH: Climb to 2500 then right turn direct PINCK LOM and hold.	
For inop ALS, increase S-ILS 18L all Cts visibility to ½ SM. For inop ALS, increase S-LOC 18L Cat C/D to 1½ SM.				

ATIS 119.325	REGIONAL APP CON 118.1 306.95	DENTON TOWER* 119.95 (CTAF)	GND CON 123.95	CLNC DEL 123.95	UNICOM 122.95
------------------------	---	---------------------------------------	--------------------------	---------------------------	-------------------------



ELEV 643	TDZE 18L 642
	TDZE 18R 643



CATEGORY	A	B	C	D
S-ILS 18L		842-½	200 (200-½)	
S-LOC 18L	1160-½	518 (600-½)	1160-1	518 (600-1)
SIDESTEP 18R	1260-1	617 (700-1)	1260-1¾ 617 (700-1¾)	1260-2 617 (700-2)
CIRCLING	1260-1	617 (700-1)	1380-2 737 (800-2)	1380-2¼ 737 (800-2¼)

Knots	60	90	120	150	180
Min:Sec	4:18	2:52	2:09	1:43	1:26

DENTON, TEXAS
Orig 31DEC20

33°12'N-97°12'W

DENTON ENTERPRISE (D'TO)

ILS or LOC RWY 18L

SC-2, 18 APR 2024 to 16 MAY 2024

SC-2, 18 APR 2024 to 16 MAY 2024