

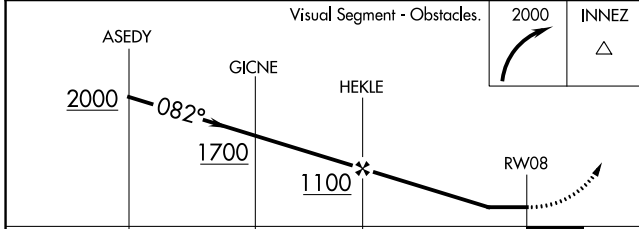
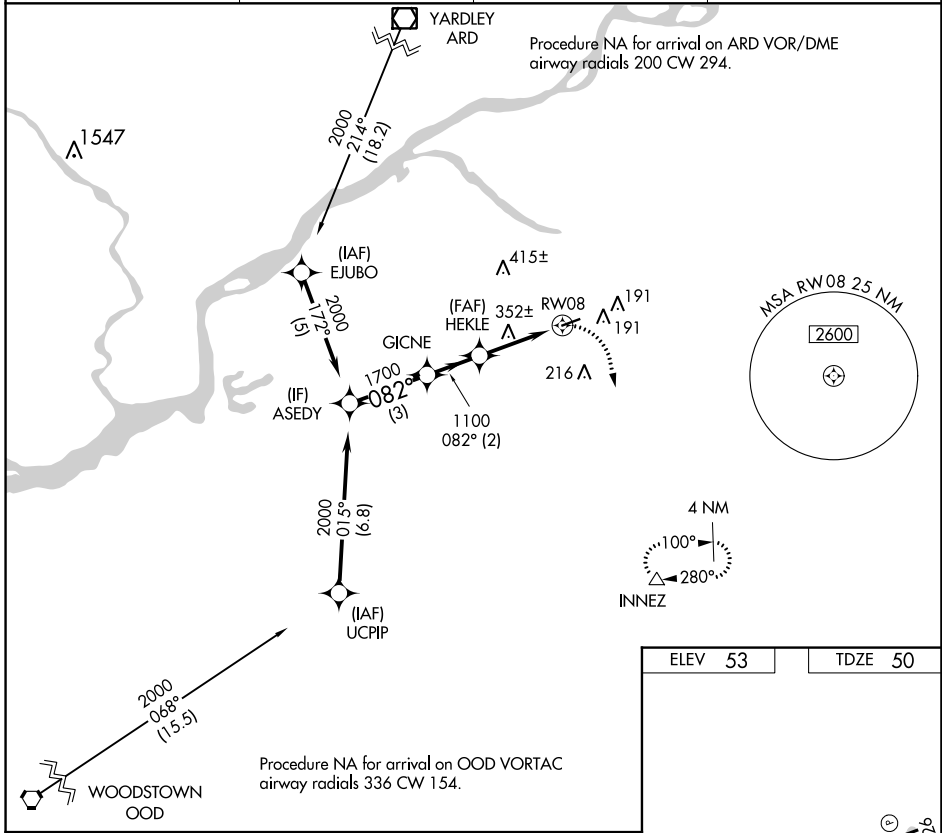
WAAS CH 69324 W08A	APP CRS 082°	Rwy Idg TDZE Apt Elev	3881 50 53
--	------------------------	-----------------------------	---------------------------------------

RNAV (GPS) RWY 8

SOUTH JERSEY RGNL (VAY)

RNP APCH. ▼ Procedure NA at night. ▲ Rwy 8 helicopter visibility reduction below 1 SM NA.	MISSED APPROACH: Climbing right turn to 2000 direct INNEZ and hold.
---	---

ASOS 119.325	MC GUIRE APP CON 126.475 363.8	UNICOM 122.8 (CTAF)	123.3
------------------------	--	-------------------------------	--------------



ELEV 53	TDZE 50
---------	---------

3881 X 50

▲ 79±

082°

MRL Rwy 8-26

REIL Rws 8 and 26

CATEGORY	A	B	C	D
LP MDA	660-1	610 (700-1)		NA
LNAV MDA	660-1	610 (700-1)		NA
CIRCLING	660-1	607 (700-1)		NA

NE-2, 18 APR 2024 to 16 MAY 2024

NE-2, 18 APR 2024 to 16 MAY 2024