

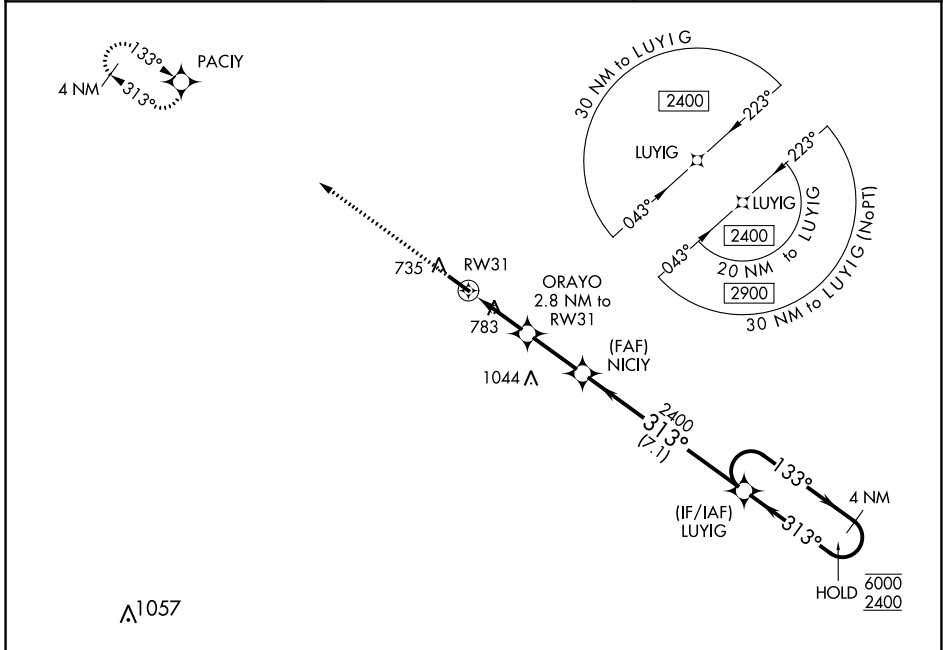
WAAS CH 45609 W31A	APP CRS 313°	Rwy Idg 4020 TDZE 640 Apt Elev 646
--	------------------------	---

RNAV (GPS) RWY 31

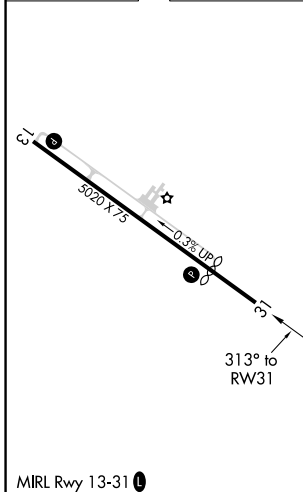
WASHINGTON/WILKES COUNTY (IIY)

RNP APCH - GPS.	<p>▼ Rwy 31 helicopter visibility reduction below $\frac{3}{4}$ SM NA. ▲ For uncompensated Baro-VNAV systems, LNAV/VNAV NA below -16°C or above 54°C.</p>	MISSED APPROACH: Climb to 2400 direct PACIY and hold.
-----------------	--	--

AWOS-3 118.375	AUGUSTA APP CON* 126.8 270.3	UNICOM 122.7 (CTAF) 0
--------------------------	--	---------------------------------



ELEV 646	TDZE 640
-----------------	-----------------



2400	PACIY	VGSI and RNAV glidepath not coincident (VGSI Angle 3.00/TCH 32).			
		ORAYO 2.8 NM to RW31	NICY 2400	LUYIG	4 NM Holding Pattern
		1.2 NM to RW31			133° → 6000 ← 313° 2400
					GP 3.10° TCH 55
		1.2 NM	1.6 NM	2.4 NM	7.1 NM
CATEGORY	A	B	C	D	
LPV DA	891- $\frac{3}{4}$		251 (300- $\frac{3}{4}$)		NA
LNAV/VNAV DA	910- $\frac{7}{8}$		270 (300- $\frac{7}{8}$)		NA
LNAV MDA	1040-1 400 (400-1)		1040-1 $\frac{1}{8}$ 400 (400-1 $\frac{1}{8}$)		NA
CIRCLING	1080-1 434 (500-1)	1100-1 454 (500-1)	1100-1 $\frac{1}{2}$ 454 (500-1 $\frac{1}{2}$)		NA

SE-4, 18 APR 2024 to 16 MAY 2024

SE-4, 18 APR 2024 to 16 MAY 2024