

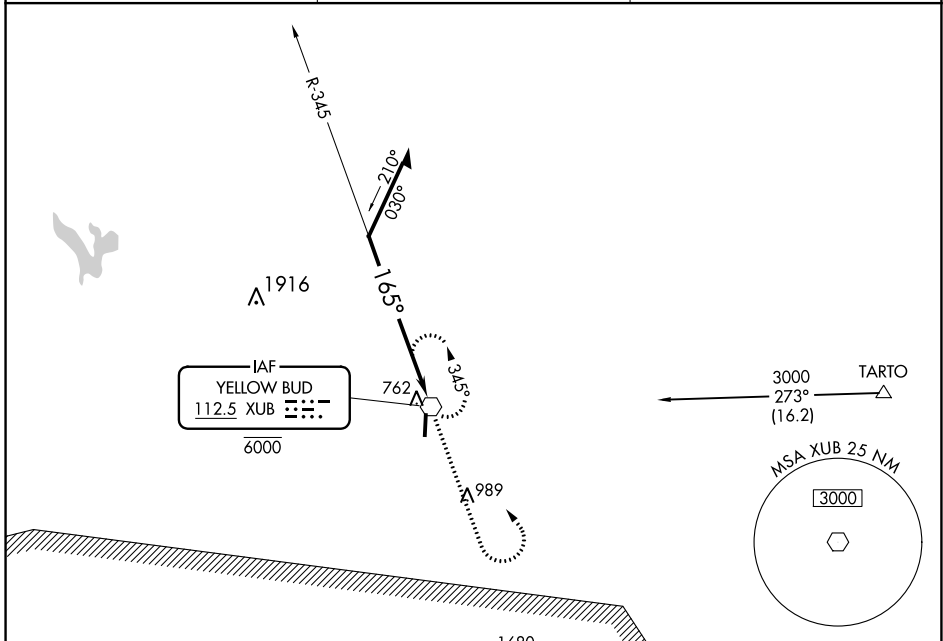
VOR XUB 112.5	APP CRS 165°	Rwy ldg 4346 TDZE 685 Apt Elev 685
-------------------------	------------------------	--

VOR RWY 19
PICKAWAY COUNTY MEML (CYO)

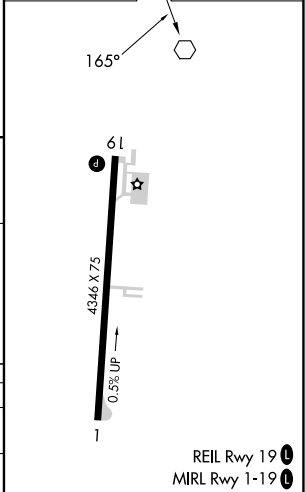
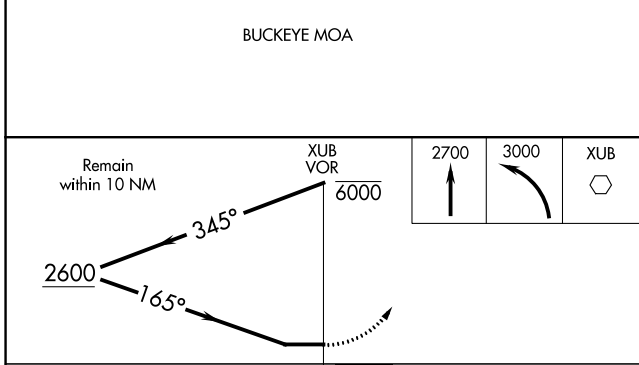
⚠ Use Chillicothe altimeter setting, when not received use Rickenbacker Intl altimeter setting and increase all MDAs 60 feet and Cats C and D visibility ¼ SM. Circling Rwy 1 NA at night. Rwy 19 helicopter visibility reduction below ¾ SM NA.

MISSED APPROACH: Climb to 2700 then climbing left turn to 3000 direct XUB VOR and hold.

RZT AWOS-3 119.225	COLUMBUS APP CON 134.0 279.6	UNICOM 122.7 (CTAF) 0
------------------------------	--	---------------------------------



ELEV 685	TDZE 685
----------	----------



CATEGORY	A	B	C	D
S-19	1320-1	635 (700-1)	1320-1¾	635 (700-1¾)
C CIRCLING	1320-1	635 (700-1)	1320-1¾	1340-2 655 (700-2)

EC-2, 18 APR 2024 to 16 MAY 2024

EC-2, 18 APR 2024 to 16 MAY 2024