

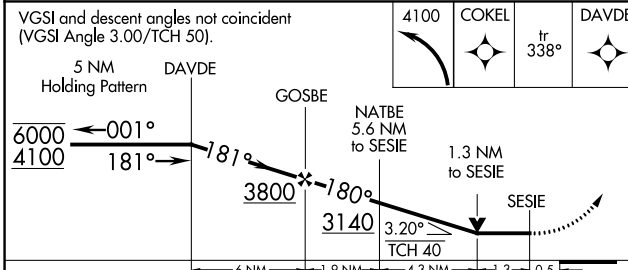
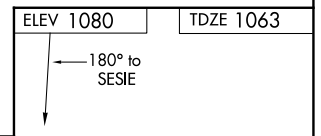
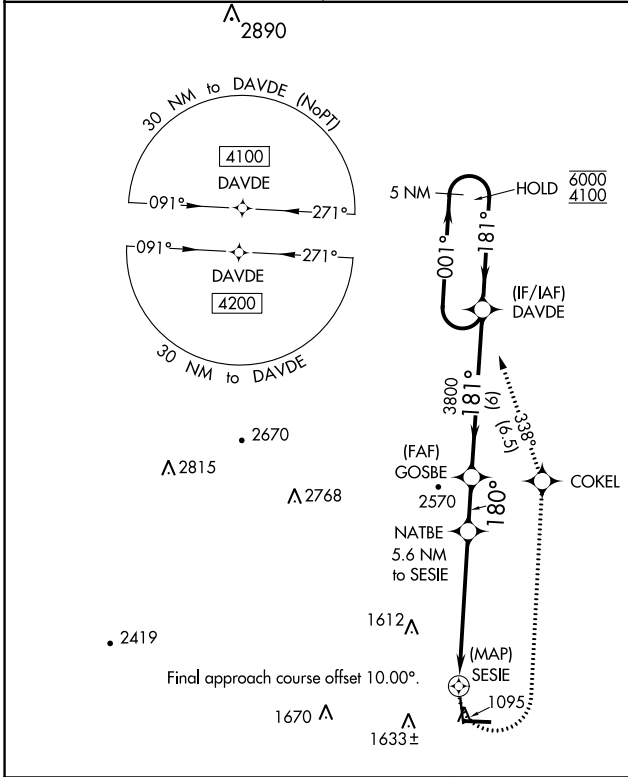
# RNAV (GPS) RWY 17

MENA INTERMOUNTAIN MUNI (MEZ)

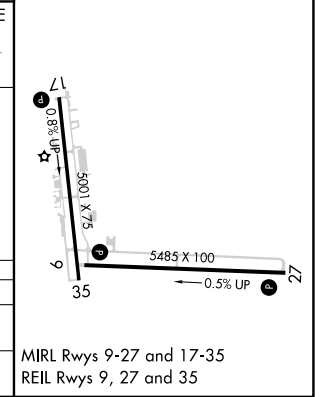
APP CRS <b>180°</b>	Rwy Idg <b>5001</b>
	TDZE <b>1063</b>
	Apt Elev <b>1080</b>

RNP APCH.  
 ▼ Circling Rwy 35 NA at night.  
 ▲ Rwy 17 helicopter visibility reduction below ¾ SM NA.  
 MISSED APPROACH: Climbing left turn to 4100 direct COKEI and track 338° to DAVDE and hold.

AWOS-3 <b>118.025</b>	MEMPHIS CENTER <b>126.1 269.0</b>	UNICOM <b>122.8 (CTAF) 0</b>
--------------------------	--------------------------------------	---------------------------------



CATEGORY	A	B	C	D
LNVA MDA	1660-1	597 (600-1)	1660-1¼ 597 (600-1¼)	NA
CIRCLING	1840-1 760 (800-1)	2140-1½ 1060 (1100-1½)	2220-3 1140 (1200-3)	NA



SC-1, 18 APR 2024 to 16 MAY 2024

SC-1, 18 APR 2024 to 16 MAY 2024