

GARLAND FIVE DEPARTURE

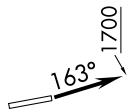
SC-2, 18 APR 2024 to 16 MAY 2024

REGIONAL DEP CON
118.1 306.95
CTAF
122.8

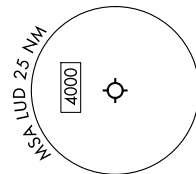
**TOP ALTITUDE:
ASSIGNED BY ATC**

RADAR and DME required.

TAKEOFF MINIMUMS
Rwy 17: Standard.
Rwy 35: Standard with minimum climb of 320'/NM to 3500.



MAVERICK
113.1 TTT
Chan 78



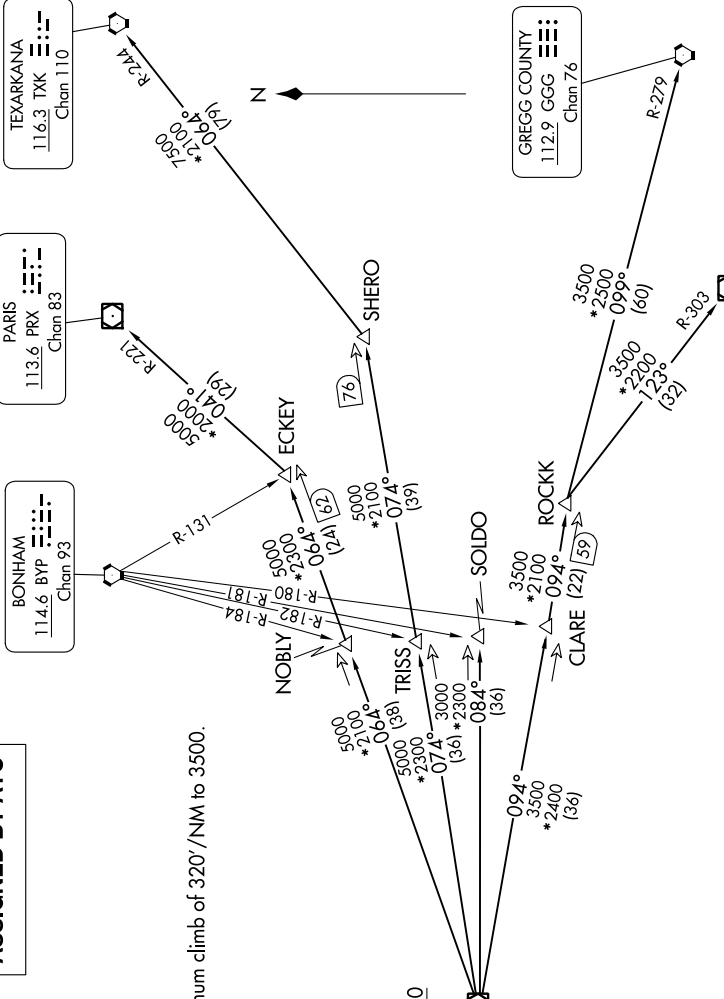
TEXARKANA
116.3 TKX
Chan 110

PARIS
113.6 PRX
Chan 83

BONHAM
114.6 BYP
Chan 93

GREGG COUNTY
112.9 GGG
Chan 76

TYLER
114.2 TYR
Chan 89



NOTE: SOLDO Transition: ATC assigned.

(CONTINUED ON FOLLOWING PAGE)

SC-2, 18 APR 2024 to 16 MAY 2024