

KUSSO ONE DEPARTURE (RNAV)

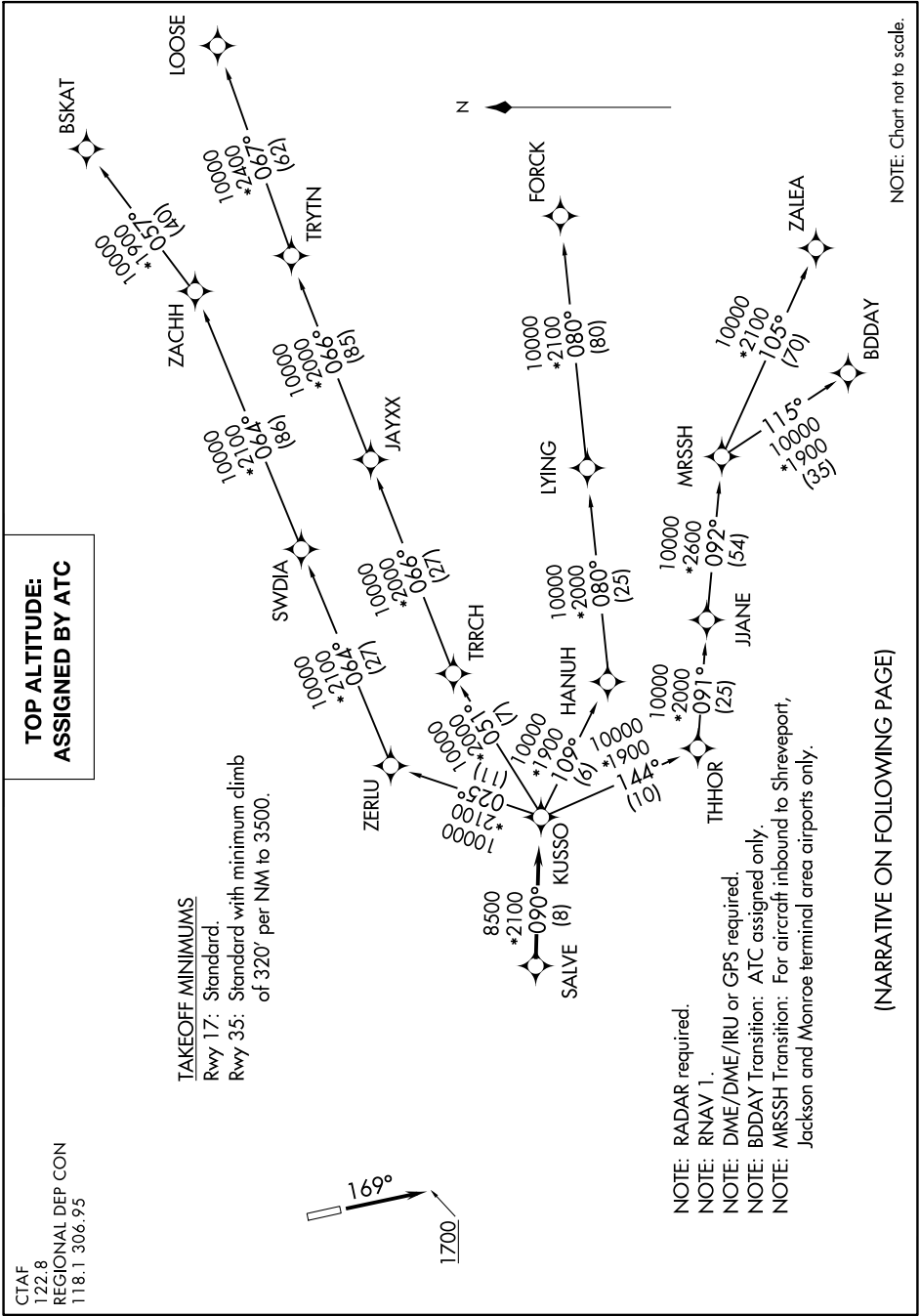
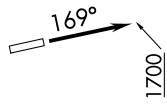
SC-2, 18 APR 2024 to 16 MAY 2024

CTAF
122.8
REGIONAL DEP CON
118.1 306.95

**TOP ALTITUDE:
ASSIGNED BY ATC**

TAKEOFF MINIMUMS

Rwy 17: Standard.
Rwy 35: Standard with minimum climb
of 320' per NM to 3500.



(NARRATIVE ON FOLLOWING PAGE)

NOTE: Chart not to scale.

SC-2, 18 APR 2024 to 16 MAY 2024

KUSSO ONE DEPARTURE (RNAV)