

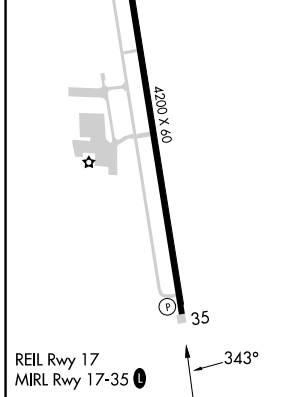
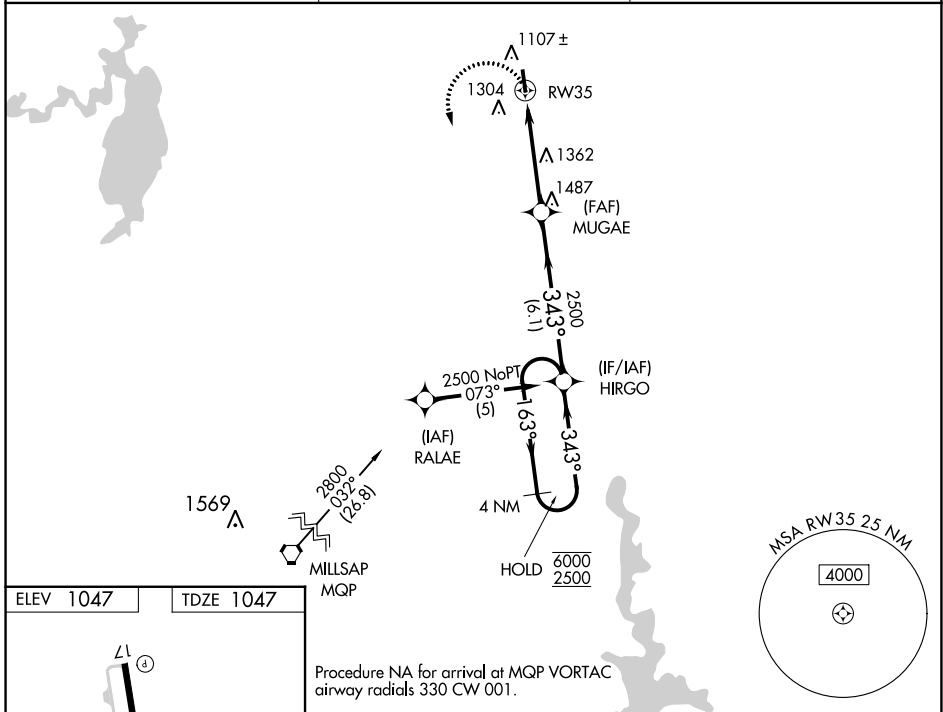
APP CRS <b>343°</b>	Rwy Idg <b>4200</b>
	TDZE <b>1047</b>
	Apt Elev <b>1047</b>

# RNAV (GPS) RWY 35

DECATUR MUNI (LUD)

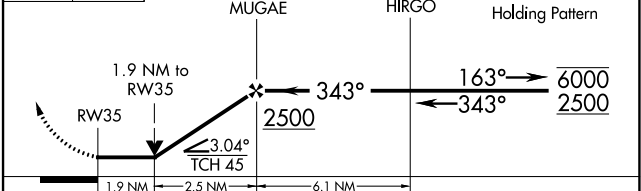
RNP APCH - GPS.	<p><b>⚠</b> Rwy 35 helicopter visibility reduction below 3/4 SM NA. VDP NA when using Fort Worth Meacham Intl altimeter setting. When local altimeter setting not received, use Fort Worth Meacham Intl altimeter setting and increase all MDAs 120 feet, and LNAV visibility Cat B 1/2 SM, and Circling Cat B 1/4 SM.</p>	<p><b>MISSED APPROACH:</b> Climbing left turn to 2600 direct HIRGO and hold.</p>
-----------------	--	--

AWOS-3 <b>118.225</b>	REGIONAL APP CON <b>118.1 306.95</b>	UNICOM <b>122.8</b> (CTAF) <b>📻</b>
--------------------------	---	--



Procedure NA for arrival at MQP VORTAC airway radials 330 CW 001.

2600	HIRGO	VGSI and descent angles not coincident (VGSI Angle 3.50/TCH 40).
------	-------	--



CATEGORY	A	B	C	D
LNAV MDA	1 680-1	633 (700-1)	NA	
<b>📻</b> CIRCLING	1 680-1	633 (700-1)	NA	

SC-2, 18 APR 2024 to 16 MAY 2024

SC-2, 18 APR 2024 to 16 MAY 2024