

WAAS CH 93825 W03A	APP CRS 027°	Rwy Idg 5500 TDZE 36 Apt Elev 36
--	------------------------	---

RNAV (GPS) RWY 3

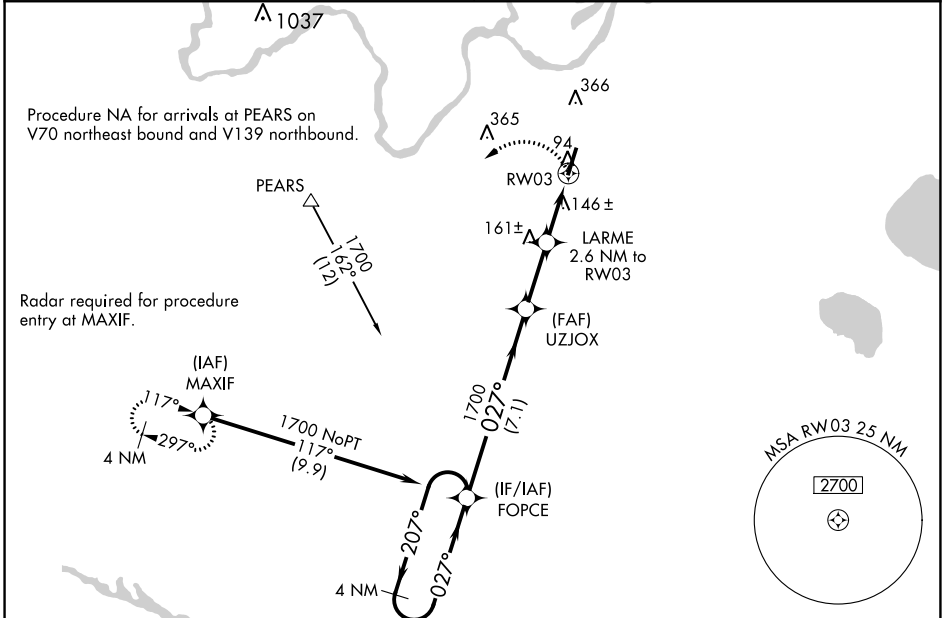
PLYMOUTH MUNI (PMZ)

▽ Use Northeastern Rgnl altimeter setting; when not received, use Coastal Carolina Rgnl altimeter setting and increase all MDA 80 feet; increase all Cat C visibilities ¼ SM.
△ NA When VGSI inop, procedure NA at night. DME/DME RNP-0.3 NA.
 Visibility reduction by helicopters NA.

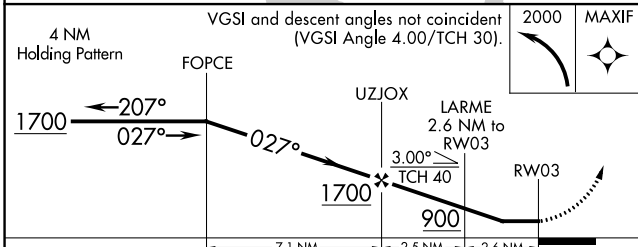
MISSED APPROACH: Climbing left turn to 2000 direct MAXIF and hold.

CHERRY POINT APP CON
119.35 377.175

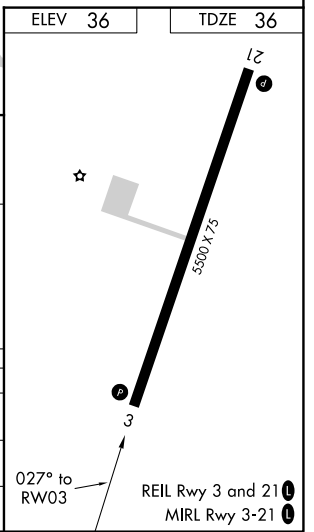
UNICOM
122.8 (CTAF)



4 NM Holding Pattern
 VGSI and descent angles not coincident (VGSI Angle 4.00/TCH 30).
 2000 MAXIF



CATEGORY	A	B	C	D
LP MDA	440-1	404 (500-1)	440-1½ 404 (500-1½)	NA
LNAV MDA	460-1	424 (500-1)	460-1¼ 424 (500-1¼)	NA
CIRCLING	520-1 484 (500-1)	720-1 684 (700-1)	720-2 684 (700-2)	NA



SE-2, 18 APR 2024 to 16 MAY 2024

SE-2, 18 APR 2024 to 16 MAY 2024